

Coupled reductive and oxidative sulfur cycling in the phototrophic plate of a meromictic lake

T. L. HAMILTON,¹ R. J. BOVEE,² V. THIEL,³ S. R. SATTIN,² W. MOHR,²
I. SCHAPERDOTH,¹ K. VOGL,³ W. P. GILHOOLY III,⁴ T. W. LYONS,⁵ L. P. TOMSHO,³
S. C. SCHUSTER,^{3,6} J. OVERMANN,⁷ D. A. BRYANT,^{3,6,8} A. PEARSON² AND J. L. MACALADY¹

¹Department of Geosciences, Penn State Astrobiology Research Center (PSARC), The Pennsylvania State University, University Park, PA, USA

²Department of Earth and Planetary Sciences, Harvard University, Cambridge, MA, USA

³Department of Biochemistry and Molecular Biology, The Pennsylvania State University, University Park, PA, USA

⁴Department of Earth Sciences, Indiana University-Purdue University Indianapolis, Indianapolis, IN, USA

⁵Department of Earth Sciences, University of California, Riverside, CA, USA

⁶Singapore Center for Environmental Life Sciences Engineering, Nanyang Technological University, Nanyang, Singapore

⁷Leibniz-Institut DSMZ-Deutsche Sammlung von Mikroorganismen und Zellkulturen, Braunschweig, Germany

⁸Department of Chemistry and Biochemistry, Montana State University, Bozeman, MT, USA

ABSTRACT

Mahoney Lake represents an extreme meromictic model system and is a valuable site for examining the organisms and processes that sustain photic zone euxinia (PZE). A single population of purple sulfur bacteria (PSB) living in a dense phototrophic plate in the chemocline is responsible for most of the primary production in Mahoney Lake. Here, we present metagenomic data from this phototrophic plate – including the genome of the major PSB, as obtained from both a highly enriched culture and from the metagenomic data – as well as evidence for multiple other taxa that contribute to the oxidative sulfur cycle and to sulfate reduction. The planktonic PSB is a member of the *Chromatiaceae*, here renamed *Thiohalocapsa* sp. strain ML1. It produces the carotenoid okenone, yet its closest relatives are benthic PSB isolates, a finding that may complicate the use of okenone (okenane) as a biomarker for ancient PZE. Favorable thermodynamics for non-phototrophic sulfide oxidation and sulfate reduction reactions also occur in the plate, and a suite of organisms capable of oxidizing and reducing sulfur is apparent in the metagenome. Fluctuating supplies of both reduced carbon and reduced sulfur to the chemocline may partly account for the diversity of both autotrophic and heterotrophic species. Collectively, the data demonstrate the physiological potential for maintaining complex sulfur and carbon cycles in an anoxic water column, driven by the input of exogenous organic matter. This is consistent with suggestions that high levels of oxygenic primary production maintain episodes of PZE in Earth's history and that such communities should support a diversity of sulfur cycle reactions.

Received 24 January 2014; accepted 30 May 2014

Corresponding authors: T. Hamilton. Tel.: +18148635168; fax: +18148637823; e-mail: tlh42@psu.edu; A. Pearson. Tel.: +16173848392; fax: +16178928340; e-mail: pearson@eps.harvard.edu; J. L. Macalady. Tel.: +18148656330; fax: +18148637823; e-mail: jlm80@psu.edu

INTRODUCTION

Euxinic conditions have been an intermittent feature of global oceans throughout Earth's history. They accompanied significant events such as Phanerozoic biotic crises (e.g., Pancost *et al.*, 2004; Grice *et al.*, 2005) and perhaps

were common in the Mesoproterozoic (Canfield, 1998; Brocks *et al.*, 2005; Reinhard *et al.*, 2013). Although rare today, persistently euxinic environments serve as modern analogues to ancient water columns and their associated sedimentary basins. Of these modern analogues, meromictic lakes have been of intense interest due to their

phototrophic chemocline communities, large geochemical gradients, and laminated sedimentary records that can preserve biosignatures (Meyer & Kump, 2008). Mahoney Lake (ML) is a small meromictic lake in British Columbia, Canada, that represents an extreme end-member of such euxinia. The hypolimnion of the lake contains high levels of sulfide (30–35 mM). ML has a pH in the range 7–9 and thus is not a soda lake (Northcote & Hall, 1983). Its dominant anion is sulfate (400–500 mM), which is supplied by local surface waters draining alkaline lavas rich in Mg^{2+} , Ca^{2+} , Na^+ , and SO_4^{2-} , and CO_3^{2-} (Northcote & Hall, 1983). The hypolimnion is anoxic, eutrophic, and very saline ($\sim 74 \text{ g L}^{-1}$ total dissolved solids (TDS)), while the epilimnion is oxic, oligotrophic, and of lower salinity ($\sim 28 \text{ g L}^{-1}$ TDS) (Northcote & Hall, 1983).

Mahoney Lake (ML) is stable year-round due to density stratification, and a 10- to 20-cm-thick chemocline occurs at a depth of about 7 m. This layer supports a dense ($\sim 10^8$ cells mL^{-1}) layer of anoxygenic phototrophs, limiting the mixing of nutrients to the epilimnion and absorbing all visible light (Overmann *et al.*, 1991, 1996a, 1996b). Primary productivity has largely been attributed to a single purple sulfur bacterium (PSB), which was originally classified as a *Thiocapsa* sp. based on cell morphology (Northcote & Halsey, 1969). However, cultivation studies yielded an okenone-producing member of the family *Chromatiaceae*, denoted strain ML1. Okenone, a biomarker for some species of PSB (e.g., Brocks & Schaeffer, 2008), is abundant in the lake sediments (Overmann *et al.*, 1993; Coolen & Overmann, 1998). Based on morphological and physiological properties, strain ML1 was reclassified as *Amoebobacter purpureus* (Overmann *et al.*, 1991) and was subsequently reclassified again to the genus *Lamprocystis* (Imhoff, 2001). More recently, 16S rRNA and *pufLM* gene sequencing revealed that strain ML1 is only distantly related to the type strain of *Lamprocystis purpurea* (Coolen & Overmann, 1998; Tank *et al.*, 2009).

While small numbers of green sulfur bacteria (GSB) are also present in and below the chemocline, the total sulfide oxidation rate cannot be attributed to PSB and GSB alone (Overmann *et al.*, 1996a). Chemoautotrophic sulfide oxidation has been observed near the oxic–anoxic interfaces of other stratified systems and by analogy may be expected in Mahoney Lake (Hadas *et al.*, 2001; Bühring *et al.*, 2011). Analysis of 16S rRNA gene sequences supports this, showing the presence of Epsilonproteobacteria that are likely to be sulfide and/or sulfur oxidizers (Klepac-Ceraj *et al.*, 2012). Sulfate reduction also occurs in the chemocline, and *in situ* generation is thought to supply much of the sulfide necessary to support anoxygenic photosynthesis (Overmann *et al.*, 1991, 1996a).

Collectively, these data indicate that complex cycling of carbon and sulfur occurs in the Mahoney Lake chemocline. The ML chemocline maintains a stable ecosystem in which

sulfate-reducing bacteria supply sulfide for both phototrophic and chemolithoautotrophic primary productivity. These primary producers in turn supply some of the organic carbon necessary to support the heterotrophic sulfate reducers, resulting in a coupled reductive and oxidative sulfur cycle. Seasonal analyses of primary productivity and sulfur oxidation and reduction rates (Overmann *et al.*, 1996a), and modeling of the carbon cycle in the chemocline (Overmann, 1997), indicate that the system must depend on additional organic carbon or other electron donors to sustain the cycle. Examining the microbial taxonomic and functional potential of such systems is critical to understanding the links between aerobic and anaerobic biogeochemical feedbacks (Johnston *et al.*, 2009).

Here, we evaluated the metabolic potential of the organisms in this community using genomic and metagenomic sequencing. High-throughput DNA sequencing provides opportunities to obtain nearly complete genomes in systems of moderate complexity, or in systems with low strain diversity of a specific ecotype (e.g., Tyson *et al.*, 2004; Iverson *et al.*, 2012). In accordance with this, we were able to analyze several nearly complete genomes. We confirmed that strain ML1 (*Chromatiaceae*) is the dominant PSB in the Mahoney Lake chemocline and that its closest taxonomic relatives belong to the genus *Thiobalocapsa*. In addition, there is a single major taxon of Epsilonproteobacteria (*Sulfurimonas* sp.); eight putative sulfate-reducing Deltaproteobacteria; other phototrophs including Cyanobacteria, Alphaproteobacteria, and GSB; and a diverse array of other organisms from the phyla Firmicutes, Mollicutes, Bacteroidetes, Actinobacteria, and Deinococcus. The results suggest that a high degree of functional redundancy exists within a system that nonetheless possesses limited taxonomic diversity within the major populations. The data also point to specific interpretations about the energy balance of sulfide-driven autotrophy and – via the taxonomic placement of genes for okenone synthesis – address the continuity between planktonic and benthic low-oxygen ecosystems.

MATERIALS AND METHODS

Chromatiaceae strain ML1: DNA Extraction, genomic sequencing, and annotation

A sample for enrichment and isolation of strain ML1 was collected from the chemocline of Mahoney Lake at a depth of 7-m on October 1, 1988 (Fig. 1A; J. Overmann, unpubl. data), and has been maintained since as an enrichment culture (Fig. 1B) using Pfennig's medium as described previously (Overmann & Pfennig, 1989). Genomic DNA was extracted according to the cetyltrimethylammonium bromide (CTAB) protocol for bacterial DNA isolation of the Joint Genome Institute [<http://my.jgi.doe.gov/general/>]. Purified DNA was sequenced with

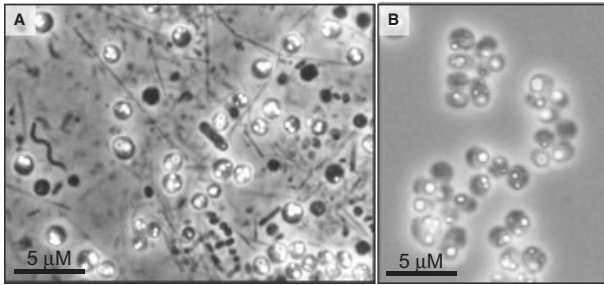


Fig. 1 Phase contrast photomicrograph of the Mahoney Lake chemocline community (A) and of strain ML1 in culture with visible intracellular sulfur globules (B).

a 454 pyrosequencer (GS FLX+; Roche, Branford, CT, USA) in the Schuster Lab at The Pennsylvania State University. A total of 278 972 211 bases in 750 635 reads, with an average read length of 372 bp were generated and assembled by Newbler assembler version 2.6 (Roche) into 867 contiguous reads (contigs) of 500 bp or larger with an average read depth of $\sim 40\times$. Contigs belonging to strain ML1 were assigned by their GC-content and verified with BLAST (Altschul *et al.*, 1990); 137 contigs (6 305 354 bp in total) with content of $>53\%$ were assigned to strain ML-1 in this way (Table 1). Contigs were annotated using RAST (<http://rast.nmpdr.org>; Aziz *et al.*, 2008).

Environmental sample collection, DNA extraction, and metagenomic sequencing

Samples were collected from the phototrophic plate at 7 m from Mahoney Lake, British Columbia ($49^{\circ}17'N$, $119^{\circ}35'W$) in July 2008. Samples were frozen on dry ice for transport to Harvard University, where they were stored at $-80^{\circ}C$ until further processed. Samples were thawed and centrifuged, and DNA was extracted from the resulting

Table 1 Statistics for the strain ML1 draft genome and the ML-Gamma and ML-Epsilon genomic bins

	Strain ML1	ML-Gamma	ML-Epsilon
Scaffolds	137	485	72
Longest (bp)	332 978	105 972	114 097
General information			
Total bp	6 305 354	5 442 835	2 742 932
Average length (bp)	46 024	12 597	29 155
N50 (bp)	114 369	17 120	38 096
Characteristics			
G + C content	68.3	65.9	38.6
Protein coding genes	5664	5433	2732
rRNA genes			
5S	1	1	0
16S	1	1	0
23S	1	1	0
tRNA genes	42	57	48

pellet with an e.Z.N.A SP Plant Maxi Kit (Omega Biotek, Norcross, GA, USA) according to the instructions of the manufacturer. The yield and quality of the extracted DNA was assessed using gel electrophoresis and spectrophotometry (Nanodrop, Wilmington, DE, USA). Fragmentation and library preparation were performed by the North Carolina State University Genomic Sciences Laboratory. Paired-end 150-bp Illumina (HiSeq 2500; Illumina, San Diego, CA, USA) sequencing was performed at the Harvard Center for Systems Biology and resulted in $\sim 300\,000\,000$ high-quality reads.

Metagenome assembly, binning, and annotation

Illumina sequencing reads were trimmed with Trimmomatic 0.20 (Lohse *et al.*, 2012). Only sequences with at least 50 base pairs in both the forward and reverse direction were retained and assembled into contigs with IDBA-UD 1.09 (Table S1), using eight threads with default parameters (Peng *et al.*, 2012). Coverage was determined by aligning raw reads to contigs with BWA 0.5.9 (Li & Durbin, 2009).

The assembled contigs were binned using emergent self-organizing maps (ESOM) based on tetranucleotide frequency, which resulted in clusters corresponding to taxonomically sorted tetranucleotide usage patterns (Dick *et al.*, 2009). A custom Python script (available at <http://github.com/bovee/Ochre>) was used to calculate tetranucleotide frequency of all contigs ≥ 2500 bp. Corresponding reverse-complement tetranucleotides were combined as described (Dick *et al.*, 2009). Contigs were split into 5000-bp segments, clustered into taxonomic groups [or 'genomic bins' (Voorhies *et al.*, 2012)] by tetranucleotide frequency and visualized with Databionic-ESOM (<http://databionic-esom.sourceforge.net>) – again using parameters from Dick *et al.* (2009) (Fig. S1). Bins were inspected for coverage. (Multimodal distribution could indicate the bin contained scaffolds derived from multiple genomes, requiring that the bin be further split, but no such instances were found.) Following manual inspection and further curation by BLAST, phylum-level taxonomic assignment was performed using Phyloshop (Shah *et al.*, 2010) and MEGAN (Huson *et al.*, 2011). Contigs larger than 2500 bp were annotated with an in-house annotation pipeline as described in the supporting online material (SOM).

The two highest-coverage bins in the metagenome, a Gammaproteobacterium referred to here as ML-Gamma and an Epsilonproteobacterium referred to as ML-Epsilon, plus four Deltaproteobacteria bins (ML-Delta 1-4) (Figs S1 and S2), were selected for in-depth characterization and taxonomic assignment of their predicted genes. For the ML-Gamma and ML-Epsilon bins, paired reads mapping to scaffolds from each bin were reassembled

using Velvet (Zerbino & Birney, 2008) as previously described (Hug *et al.*, 2013). Scaffolds of each re-assembly were annotated as described in the SOM. Genome completeness was evaluated using a suite of 76 genes selected from a set of single-copy marker genes that show no evidence for lateral gene transfer (Sorek *et al.*, 2007; Wu & Eisen, 2008) (Tables S2 and S3). The ML-Gamma genomic bin was annotated by RAST for comparison to the strain ML1 (*Chromatiaceae*) genome. The number of genomes per bin assigned to the Deltaproteobacteria was estimated using 35 single-copy orthologous groups (Raes *et al.*, 2007; Handley *et al.*, 2012; Table S4). Genome coverage was estimated by assuming that the genome size of each phylotype was approximately the same as its closest relative (Whitaker & Banfield, 2006; Jones *et al.*, 2012).

Taxonomic assignments and phylogenetic analyses

16S rRNA sequences often fail to assemble into larger contigs and scaffolds in metagenomic studies, and independent assemblies of these genes [e.g., Phyloshop (Shah *et al.*, 2010) or EMIRGE (Miller *et al.*, 2011)] are difficult to assign to bins separated by genomic signatures such as %GC-content or tetranucleotide frequency. To overcome these obstacles, single-copy ribosomal proteins were analyzed as described in the SOM (Table S5) to make genus-level assignments of the ML-Gamma genomic bin and the ML-Epsilon genomic bin. Such analyses yield resolution comparable to that for 16S rRNA phylogenetic trees (Hug *et al.*, 2013).

The phylogenetic position of bacterial 16S rRNA genes was evaluated by approximate likelihood-ratio tests (Anisimova & Gascuel, 2006) as implemented in PhyML. Sequences were aligned and the best evolutionary model was determined using jMODELTEST (version 2.1.1, Darriba *et al.*, 2012). Maximum-likelihood reconstructions used the General Time Reversible substitution model and gamma-distributed rate variation with a proportion of invariable sites as recommended by jMODELTEST. Phylograms were rate-smoothed using the multidimensional version of Rambaut's parameterization as implemented in PAUP v. 4.0 (Swofford, 2001) as previously described (Meuser *et al.*, 2013). Methods for gene-specific phylogenetic analyses (e.g., *soxB*, *cruO*; Table S6) are provided in the SOM.

Nucleotide sequence accession numbers

Metagenomic sequence data are deposited at CAMERA (<http://camera.calit2.net/>), and the assembled sequences can be accessed via IMG/M (<http://img.jgi.doe.gov>). Metagenome bin sequences – ML-Gamma and ML-Epsilon – are deposited at DDBJ/EMBL/GenBank under the accession numbers AZMQ00000000 and AZMQ00000000,

respectively; and the versions described in this paper are AZMQ01000000 and AZMQ01000000, respectively. The draft genome sequence of *Thiobalocapsa* sp. strain ML1 (*Chromatiaceae*) is deposited at DDBJ/EMBL/GenBank under the accession JABX00000000. The version described in this paper is version JABX01000000. Gene IDs reported in Table S6 represent the assembled gene sequences available on the IMG/M Web site.

RESULTS

Genomic sequencing of the highly enriched culture of strain ML1 resulted in a draft genome of strain ML1, a *Chromatiaceae* sp. Contigs of the draft genome of strain ML1 were easily resolved from a contaminant organism belonging to the class Mollicutes by %GC (68% vs. ~30%) and verified by BLAST. The draft genome assembled into 137 scaffolds containing 6.3 Mbp (Table 1).

De novo assembly of the metagenomic data from 7 m water depth resulted in 452 140 contigs containing ~ 640 Mbp. The vast majority of contigs could be assigned to bacteria, while smaller numbers of eukaryotic, archaeal, and viral sequences were recovered (Fig. 2A). Most of the bacterial contigs (>60%) were affiliated with Proteobacteria, but sequences affiliated with Firmicutes, Bacteroidetes, and Actinobacteria were also abundant (Fig. 2B). Tetranucleotide frequency analysis of the *de novo* metagenomic assembly resolved 26 distinct taxonomic bins (Fig. S1), including well-defined genomic bins for a Gammaproteobacterium (ML-Gamma) and an Epsilonproteobacterium (ML-Epsilon). These two organisms represent the dominant members associated with the oxidative arm of the sulfur cycle. Four distinct bins of sulfate-reducing Deltaproteobacteria (ML-Delta), including *Desulfobacterales* and *Desulfovibrionales*, were also resolved, and these bins collectively contained at least eight genomes (Fig. S2). As observed in other studies employing similar binning strategies (e.g., Handley *et al.*, 2012), the coverage, GC-content, and phylogenetic similarity of scaffolds within the Deltaproteobacteria bins precluded further resolution of individual genomes. In contrast, the Gamma- and Epsilonproteobacteria bins each contained a single genome. We also recovered six low coverage bins affiliated with the *Rhodobacteriales* of the Alphaproteobacteria, three bins of Actinobacteria and Bacteroidetes, two other (non-photosynthetic) Gammaproteobacteria bins (*Xanthomonadales* and *Thiotricales*), and single bins affiliated with Betaproteobacteria (*Burkholderiales*), Cyanobacteria, Spirochetes, and Mollicutes, (Fig. S1). Based on %GC and BLAST results, the Mollicutes bin recovered from the metagenome is not the same Mollicutes organism present in the co-culture with strain ML1 (data not shown). These results reveal a diverse capacity for sulfur and carbon cycling in the Mahoney Lake chemocline.

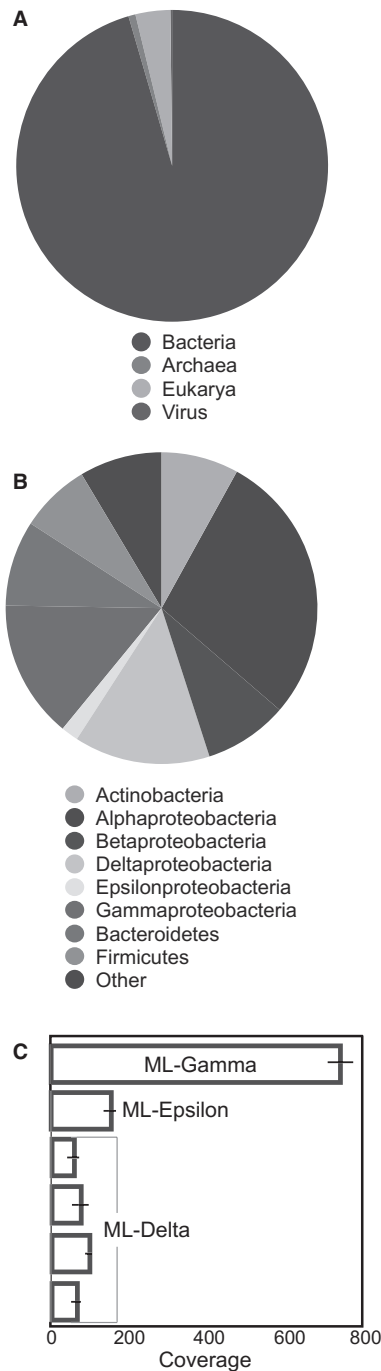


Fig. 2 Taxonomic affiliation of all sequences in the 7-m metagenome and coverage of genome bins. (A) Number of sequences affiliated with each domain. (B) Number of sequences assigned at the phylum level (except the Proteobacteria which are represented by class). (C) Genomic bins distinguished by read coverage. Other indicates all phyla represented by <800 sequences.

Here, we will focus on genomic insights as they relate to sulfur and carbon cycling catalyzed by the high-coverage Gammaproteobacterium, the Epsilonproteobacterium, and the members of the Deltaproteobacteria. Together, these

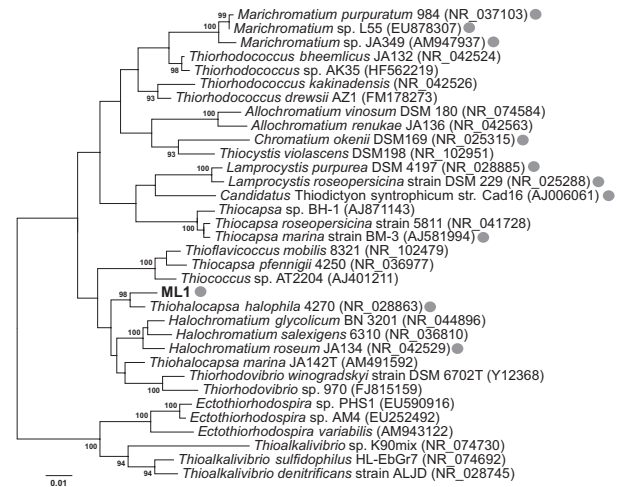


Fig. 3 Maximum-likelihood-based phylogenetic 16S rRNA gene tree of closely related Gammaproteobacteria and strain ML1 (*Chromatiaceae*). Accession numbers are provided in parentheses. Gray circles indicate species that synthesize okenone. Bootstrap support values based on 1000 bootstrap samplings >90 are noted.

taxa are sufficient to demonstrate a complete oxidative, reductive, and phototrophic sulfur cycle. We also discuss the correspondence between the high-coverage Gammaproteobacterium and isolate strain ML1, and we address implications for the presence of the carotenoid pigment, okenone, in the geologic record.

Oxidative sulfur cycle

Strain ML1 (*Chromatiaceae*) and the ML-Gamma genomic bin

The highest-coverage organism in the metagenome, ML-Gamma (Fig. 2C), contains a 16S rRNA gene identical to strain ML1 (Coolen & Overmann, 1998; EMBL acc. no. AJ006212). Phylogenetic analysis of 19 concatenated phylogenetic marker genes (Table S5) indicates that the ML-Gamma genome bin is strain ML1 or a very closely related ecotype (Fig. S3). Alignment of single-copy genes between strain ML1 and the ML-Gamma bin (Table S2) shows >99% identity across these phylogenetic markers. The ML-Gamma genome bin is similar in size (5.7 Mbp) to the draft genome (6.3 Mbp) of strain ML1 and contains 73 of these 76 marker genes (Table S2), indicating that it is >90% complete.

Taxonomic assignment places strain ML1 into the order *Chromatiales* and the family *Chromatiaceae*. In contrast to the initial assignment based on morphological and physiological characteristics, our 16S rRNA gene sequence analysis indicates that this strain is most closely related to *Thiohalocapsa* spp. and *Halochromatium* spp. (Fig. 3). The 16S rRNA gene of strain ML1 is 98% identical to that of *Thiohalocapsa halophila* 4270^T (DSM 6210^T), which is its closest cultured relative. In contrast, phylogenetic analysis

based on concatenated sequences of phylogenetic marker genes shows that strain ML1 is most closely affiliated with *Thiorhodovibrio* spp., including *Thiorhodovibrio* sp. 970 and the Mahoney Lake shoreline isolate *Thiorhodovibrio winogradsky* (Overmann *et al.*, 1992) (Fig. S3); however, this analysis is restricted to available complete genomic sequences, which currently includes no members of the genera *Thiohalocapsa* and *Halochromatium*.

Strain ML1 and the ML-Gamma metagenomic bin both encode the genes necessary for photoautotrophic growth utilizing reduced sulfur compounds as the electron source for carbon dioxide reduction. These genomes contain a *puf* operon encoding a type-2 photochemical reaction center comprised of the subunits PufL, PufM, and PufH, which are identical in arrangement and sequence to the previously published *puf* operon of the isolate (Tuschak *et al.*, 2005); bacteriochlorophyll *a* biosynthesis genes; and genes (e.g., *csoS*) for alpha-carboxysomes. Both genomes contain *cbbLS* and *cbbM* genes, which encode Forms I and II of RuBisCO, the key enzyme in the Calvin–Benson–Bassham (reductive pentose phosphate) cycle. Genes encoding the large and small subunit of RuBisCO form I, *cbbL* and *cbbS*, are clustered with *csO* genes encoding carboxysome shell proteins; while the form II gene *cbbM* is located elsewhere in the genome. The CbbL and CbbM sequences of strains ML1 and the ML-Gamma genome are closely related to those of the species ‘*Candidatus* Thiodictyon syntrophicum’ strain Cad16 from Lake Cadagno (Peduzzi *et al.*, 2012) (Fig. S4), which preferentially expresses Form I RuBisCO when CO₂ assimilation rates are high (Storelli *et al.*, 2013). Consistent with the observation of gas vesicles both in the isolate and in samples collected from the chemocline (Overmann *et al.*, 1991), we observed *gvp* genes which encode gas vesicle proteins. Both genomes also encode a *cbb₃*-type heme-copper cytochrome oxidase, which is capable of maintaining catalytic activity under micro-oxic conditions (Pitcher & Watmough, 2004), as well as genes for a *hox*-type, bi-directional [NiFe]-hydrogenase and succinate dehydrogenase. Genes encoding a Type-I NADH dehydrogenase (*nuo*), Mo-dependent nitrogenase (*nifHDK*) (Fig. S5), and an Rnf-electron transport complex (*Rhodobacter* nitrogen fixation, *rnf*-encoded) were also identified in both genomes. Rnf complexes are widely distributed and are thought to mediate electron transfer between NADH and ferredoxin (Biegel *et al.*, 2011), and they may also play a role in nitrogen fixation (Jeong & Jouanneau, 2000).

The data also confirm that this taxon encodes all enzymes necessary for biosynthesis of the carotenoid okenone, an abundant compound in the Mahoney Lake chemocline particulates, along the shoreline, and in sediment cores (Overmann *et al.*, 1991) (Fig. 4). These data include genes encoding an *O*-methyltransferase (CrtF), the CrtY and CrtU proteins necessary for synthesis of the

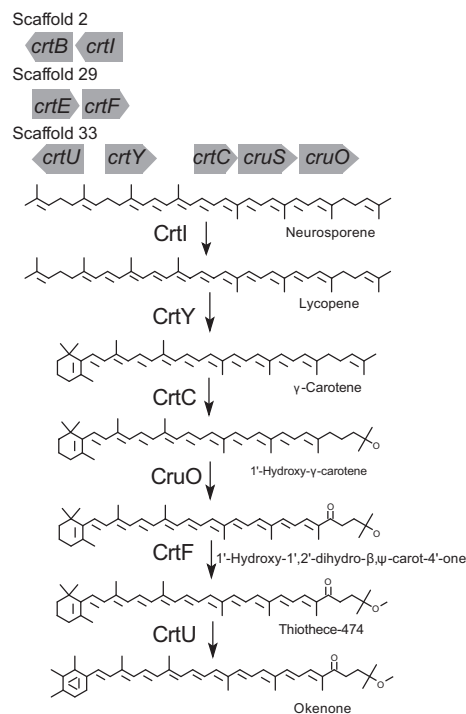


Fig. 4 Predicted pathway for okenone synthesis of strain ML1 and ML-Gamma based on genes identified in the genome and genome bin, respectively. Scaffold numbers refer to the location of predicted genes in the draft genome of strain ML1. Proteins and the reactions they catalyze in the pathway for the biosynthesis of okenone, from Vogl & Bryant, 2011, are summarized.

χ -ring of okenone, and the unique CruO 4/4' ketolase protein (Vogl & Bryant, 2011, 2012) (Fig. S6). Importantly, the genes encoding CruO and the associated CruS enzyme in the ML-Gamma genome bin are the only copies of these diagnostic genes detected in the entire metagenome, establishing that this PSB taxon is probably the only source of okenone in the chemocline.

The genomes of strain ML1 and ML-Gamma encode thiosulfate oxidation enzymes (Sox), a flavocytochrome *c*-sulfide dehydrogenase (Fcc), and a D-type sulfide:quinone oxidoreductase (Sqr) (Fig. 5, Fig. S7) (Gregersen *et al.*, 2011). SoxA, B, X, Y, and Z comprise a multi-enzyme complex of SoxXA, a heterodimeric *c*-type cytochrome; SoxB; and SoxYZ, a heterodimeric thiosulfate-binding protein necessary for oxidation of thiosulfate to sulfate. As in other purple sulfur bacteria, no *soxCD* genes were found in either the isolate genome or the genome bin. In other *Chromatiaceae* that lack *soxCD* – for example, *Allochromatium vinosum* – sulfur/polysulfide globules form in the periplasm as oxidation intermediates (Hensen *et al.*, 2006; Frigaard & Dahl, 2009; Dahl *et al.*, 2013). In *Alc. vinosum*, reverse dissimilatory sulfite reductase (DsrAB) and other related Dsr proteins – including the transmembrane complex DsrMKJOP, the DsrEFH complex, and DsrC – are necessary for oxidation of the

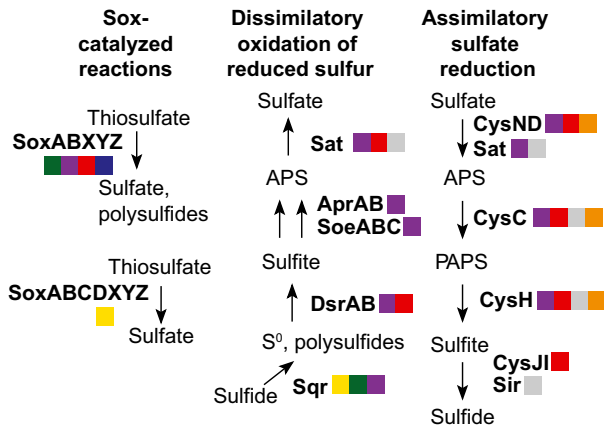


Fig. 5 Predicted oxidative sulfur cycle in the Mahoney Lake chemocline based on genes identified in the metagenome. Colors indicate the phylogenetic affiliation of the predicted proteins. Red, Alphaproteobacteria; Yellow, Epsilonproteobacteria; Purple, Gammaproteobacteria; Green, green sulfur bacteria; Gray, Cyanobacteria; Blue, Betaproteobacteria; Orange, Bacteroidetes. Abbreviations: APS, Adenosine-5'-phosphosulfate; PAPS, 3-Phospho-adenosine-5'-phosphosulfate.

stored sulfur to sulfite (Dahl *et al.*, 2008; Oliveira *et al.*, 2008; Grein *et al.*, 2010). The DsrEFH complex, involved in sulfur transfer reactions, is encoded in genomes of sulfur-oxidizing prokaryotes that also encode DsrAB but is absent in sulfate-reducing organisms (Sander *et al.*, 2006; Grimm *et al.*, 2008). Genes encoding the reverse Dsr proteins, including DsrEFH, are present in strain ML1 (and ML-Gamma), and their gene context is similar to the genomic context that is observed in *Alc. vinosum* (Grein *et al.*, 2010).

Genes encoding homologues of key enzymes involved in dissimilatory oxidation of reduced sulfur and assimilatory sulfate reduction are present (Fig. 5), including an adenosine phosphosulfate reductase (APS reductase, ApsAB) and a sulfate adenyltransferase (ATP-sulfurylase, Sat). In some PSB, indirect oxidation of sulfite in the cytoplasm results from the activity of APS reductase and ATP-sulfurylase; however, these enzymes are not required for sulfite oxidation and are not universally found in sulfur-oxidizing prokaryotes (Dahl *et al.*, 2013). The genomes also encode homologues of the SoeABC sulfite-oxidizing enzyme complex, which is believed to oxidize sulfite presumably by transferring electrons to the electron transport chain via the quinone pool (Dahl *et al.*, 2013), as well as enzymes involved in assimilatory sulfate reduction including adenyl sulfate kinase (CysC), phosphoadenosine phosphosulfate reductase (CysH), and an NADPH-dependent sulfite reductase (CysJI) (Fig. 5).

The ML-Epsilon genomic bin

The ML 7-m metagenome contains a well-defined genomic bin identified as an Epsilonproteobacterium closely related to *Sulfurimonas autotrophica* (Fig. 6), a chemo-

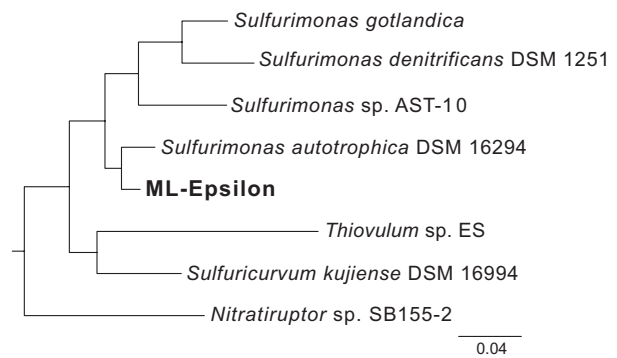


Fig. 6 Maximum-likelihood phylogenetic tree of 14 concatenated single-copy ribosomal proteins (Table S5) showing the taxonomic placement of the ML-Epsilon genomic bin. Bootstrap support values based on 1000 bootstrap samplings were >85 for each node.

lithoautotrophic, sulfur-oxidizing aerobe that can use elemental sulfur, sulfide, and thiosulfate as electron donors (Inagaki *et al.*, 2003). Based on the presence of phylogenetic marker genes, the assembled genome is estimated to be >90% complete, and it is similar in size (~2.7 Mbp) (Table 1) to that of several closely related species, including the genome of *S. autotrophica* (~2.1 Mbp). Similar to characterized chemolithoautotrophic Epsilonproteobacteria, the ML-Epsilon genome encodes the enzymes necessary for carbon fixation via the reverse TCA (rTCA) cycle, including ATP-dependent citrate lyase (*acl*), pyruvate:ferredoxin oxidoreductase (*porAB*), and 2-oxoglutarate:ferredoxin oxidoreductase (*oorAB*) (Campbell *et al.*, 2006), but does not contain RuBisCO genes (*cbbLS* or *cbbM*). Unlike *S. autotrophica*, the ML-Epsilon genome encodes enzymes for the reduction of nitrate to N₂, including a periplasmic nitrate reductase (NapAB), a cytochrome *cd*₁-dependent nitrite reductase (NirS), a nitric oxide reductase (NorBC), and nitrous oxide reductase (NosZ). These genes, together with the *sox* and *sqr* genes, suggest that nitrate-dependent sulfide oxidation can occur under anoxic conditions (Simon & Klotz, 2013). Similar to other *Sulfurimonas* spp., the ML-Epsilon genomic bin encodes a Mo-dependent nitrogenase and an ammonium transporter (Amt). It also contains cytochrome *cbb*₃ oxidase and cytochrome *bd* quinol oxidase genes, both of which are high-affinity terminal oxygen reductases capable of functioning under micro-oxic conditions; formate dehydrogenase (*fdhABC* genes); and two [NiFe]-hydrogenases, one cytoplasmic and one membrane-bound – suggesting this organism may use H₂ and formate as electron donors in addition to sulfide.

Reflecting its role in the sulfur cycle, the genome contains a B-type sulfide:quinone oxidoreductase (Sqr) (Fig. S7) (Gregersen *et al.*, 2011), which catalyzes the oxidation of sulfide to polysulfide, and *soxCD* genes, which indicate that the organism is capable of oxidizing

thiosulfate to sulfate (Fig. 5). The genome also encodes a membrane-bound polysulfide reductase (*psr*-encoded), which may enable the use of polysulfide as an electron acceptor (Hedderich *et al.*, 1998); a sulfite cytochrome *c* oxidoreductase (Sor), possibly involved in the inorganic disproportionation of reduced sulfur compounds (Finster, 2008); and a rhodanese-related sulfurtransferase presumably involved in the oxidation of thiosulfate (Ghosh & Dam, 2009).

Other organisms putatively involved in the oxidative sulfur cycle

The 7-m metagenome contains multiple copies of key enzymes involved in sulfur oxidation that are assigned to other taxonomic bins. These include genes encoding sulfide:quinone oxidoreductase (Sqr), flavocytochrome *c* (Fcc), components of dissimilatory sulfite reductase (DsrAB, DsrEFH, DsrC, and the DsrMKJOP complex), the Sox multi-enzyme complex, and components of assimilatory sulfate reduction (CysND, CysC, CysH, CysJI, Sat, and Sir) (Fig. 5; Table S7). The *sox*-encoded enzymes of thiosulfate oxidation are most abundant among these, while six copies each of homologs of DsrE, F, and H, specific to sulfur-oxidizing organisms are present. Full-length SoxB sequences affiliated with the Alpha-, Beta-, and Gammaproteobacteria were recovered from other tetranucleotide-resolved genomic bins (Fig. 7). More putative sequences for SoxA and SoxB were present (31 and 33 copies, respectively) than the *sox*-encoded proteins C, D, X, Y, Z (Table S7), and the majority are affiliated with Alphaproteobacteria. Several *sox* and *sqr* genes affiliated with GSB, which use the Sox system for thiosulfate oxidation (Ogawa *et al.*, 2008; Gregersen *et al.*, 2011), were also observed (Table S7), despite the low number of reads assigned to the phylum Chlorobi. The translated *sqr* sequences cluster near the SqrD-type of *Chlorobaculum tepidum* TLS (Gregersen *et al.*, 2011; Holkenbrink *et al.*, 2011) (Fig. S7; Table S8).

Reductive arm of the sulfur cycle

ML Deltaproteobacteria community genomic bins

The Mahoney Lake chemocline contains multiple taxa of Deltaproteobacteria, including at least eleven distinct genotypes (Fig. S8A) based on ribosomal protein S3 sequences (Hug *et al.*, 2013). At least six genomes of *Desulfurobacteriales* spp. (present in genomic bins designated Delta 1, 3, and 4) and at least two *Desulfovibrionales* spp. genomes (genomic bin designated Delta 2) (Table S9, Figs S1 and S2) could be resolved. The high degree of phylogenetic similarity, GC-content, and coverage among the Deltaproteobacteria spp. precludes the resolution of single genomes. The recovery of multiple sulfate-reducing bacteria (SRB) genomes across several tetranucleotide bins indicates

organismal redundancy is also present within the reductive arm of the sulfur cycle.

The genomic bins assigned to the *Desulfurobacteriales* and *Desulfovibrionales* encode the enzymes necessary for dissimilatory sulfate reduction, including a sulfate adenylyltransferase (ATP-sulfurylase, Sat), an APS reductase (AprAB), and the dissimilatory sulfite reductase complex (DsrAB, DsrC, and DsrMKJOP), which catalyzes the reduction of SO_3^{2-} to S^{2-} (Fig. S8B). The genomic bins also encode Mn-dependent, inorganic pyrophosphatase (PpaC) and abundant ferredoxins (predominantly Ferredoxin I). The genomes contain homologues of D-lactate dehydrogenase (gene *ldhA*) and pyruvate dehydrogenase (gene *pdh*) for conversion of lactate to acetyl-CoA, as well as carbon monoxide dehydrogenase/acetyl-CoA synthetase (CODH/ACS). Many acetotrophic SRBs employ a CODH/ACS pathway to cleave acetyl-CoA, and yet the presence of CODH/ACS genes in SRBs closely related to autotrophic species (i.e., *Desulfovibrio* spp.; Fig. S8A) also suggests at least facultative autotrophy may occur (Schauder *et al.*, 1989). The ML-*Desulfovibrionales* genomic bins also encode fumarate reductases, indicating that these organisms may be capable of fumarate respiration; a periplasmic [FeFe]-hydrogenase (HydA); and heterodisulfide reductase-like proteins, specifically HdrA- and HdrD-related proteins, which are thought to be involved in sulfite reduction through DsrC or reduction of the menaquinone pool (Pereira *et al.*, 2011). The SRB genomic bins also encode Mo-dependent nitrogenases (*nifHDK*).

Other organisms putatively involved in the reductive sulfur cycle

Genes from other species involved in reducing sulfur compounds include 21 unique copies of *dsrD*. Although the exact function of DsrD remains unknown, it is postulated to be involved in sulfite reduction (Grein *et al.*, 2013) and is typical of SRB, but it is not found in sulfur-oxidizing organisms (Grimm *et al.*, 2008). The metagenome also contains tetrathionate reductase genes (*ttr*), which catalyze the reduction of tetrathionate to thiosulfate and are widely distributed in the Enterobacteriaceae and other facultative anaerobes (Zopfi *et al.*, 2004). Dimethyl sulfoxide (DMSO) reductase (DmsA), also common in anaerobic heterotrophic bacteria, was identified. The majority of *ttr* and *dmsA* sequences were affiliated with the Firmicutes, Deltaproteobacteria, and the Alpha- and Gammaproteobacteria (Table S7).

Phylogenetic diversity of *dsr*

The 7-m metagenome contains eleven distinct copies of *dsrAB*, encoding dissimilatory sulfite reductase, the enzyme necessary for sulfite reduction or sulfur oxidation (Fig. 8). Concatenated amino acid sequence alignments of full-

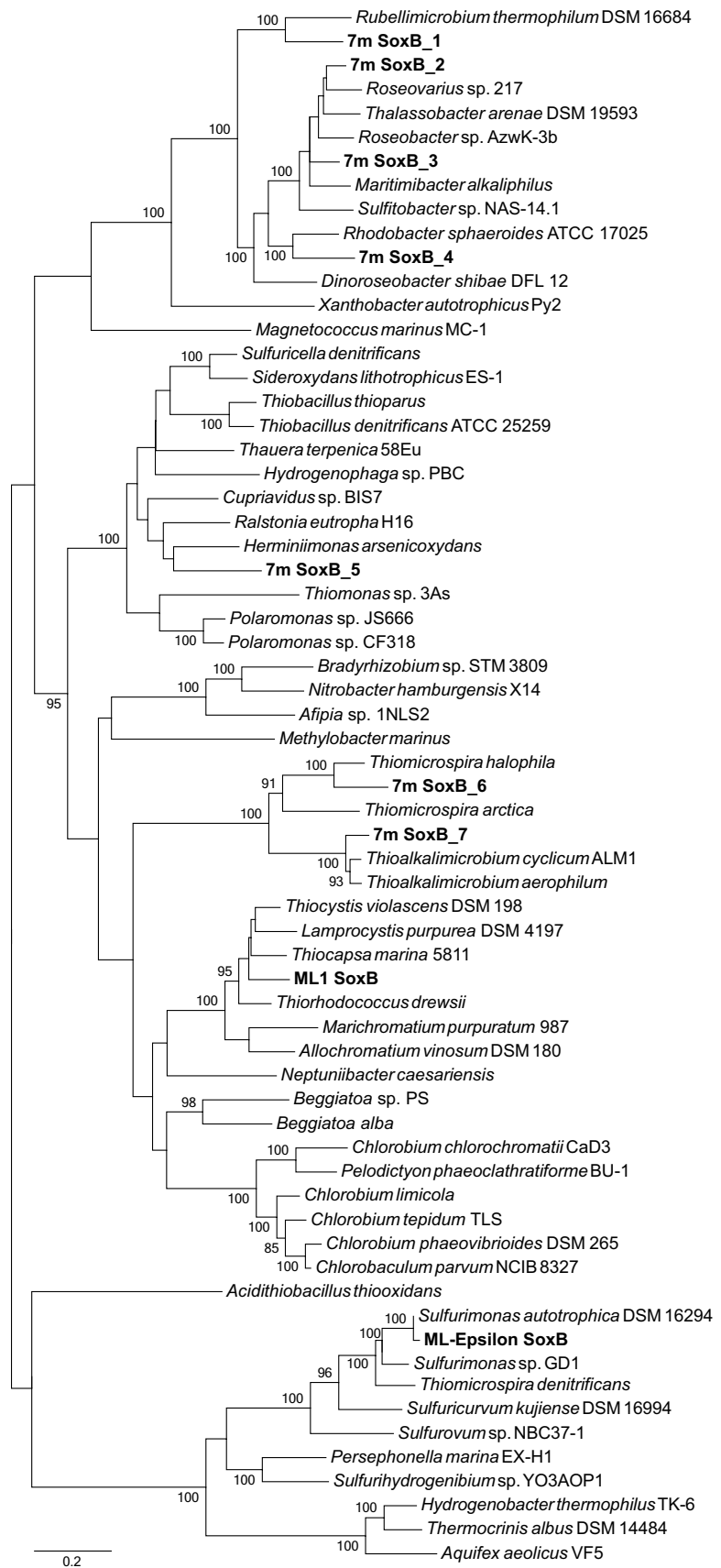


Fig. 7 Phylogenetic diversity of SoxB in the Mahoney Lake chemocline. Maximum-likelihood phylogenetic tree constructed from translated SoxB sequences identified in the ML 7-m metagenome. Red, Alphaproteobacteria; orange, Betaproteobacteria; purple, Gammaproteobacteria; green, green sulfur bacteria; black, Acidithiobacillia; yellow, Epsilonproteobacteria; blue, Aquificales. The strain ML1 genome and ML-Gamma genomic bin contain identical SoxB sequences represented here as ML1. Abbreviations: SRB, sulfate-reducing bacteria; SOB, sulfur-oxidizing bacteria. Bootstrap support values based on 1000 bootstrap samplings ≥ 85 are shown for each node.

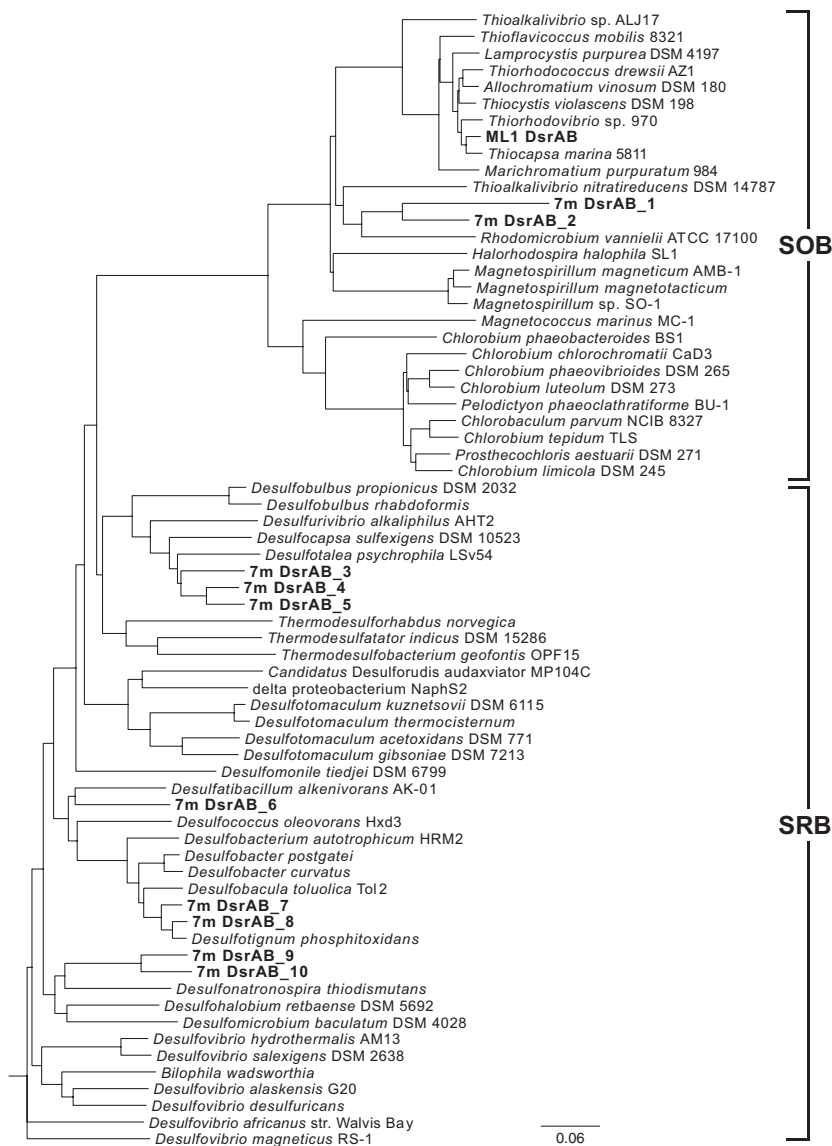


Fig. 8 Phylogenetic diversity of dissimilatory sulfate reductase (Dsr) in the Mahoney Lake chemocline. Maximum-likelihood phylogeny calculated from a concatenated amino acid sequence alignment of DsrA and DsrB sequences recovered from the ML 7-m metagenome and representative sequences from the Deltaproteobacteria and sulfur-oxidizing members of the Alpha- and Gammaproteobacteria. DsrA and DsrB sequences of strain ML1 and ML-Gamma are identical and represented by ML1. Abbreviations: SRB, sulfate-reducing bacteria; SOB, sulfur-oxidizing bacteria.

length alpha and beta subunits (DsrA and DsrB, respectively) confirm the presence of multiple sulfate-reducing Deltaproteobacteria-affiliated sequences and several sulfur-oxidizing Alpha- and Gammaproteobacteria-affiliated sequences. Several of these SRB-affiliated sequences are not represented in the genome bins discussed above and presumably are derived from other less abundant taxa in the system. No *dsrA* or *dsrB* genes affiliated with GSB were recovered despite the observation that nearly all GSB contain *dsr* (Frigaard & Bryant, 2008). This is most likely due to the low abundance of reads assigned to GSB in the 7-m metagenome.

Phylogenetic diversity of RuBisCO

In addition to the ML-Gamma *cbbl* and *cbbm* sequences, the 7-m metagenome contains fourteen full-length genes

encoding ribulose 1,5-bisphosphate carboxylase/oxygenase (RuBisCO). Of these, five group with the Type IV RuBisCO-like proteins (RLP), which apparently do not catalyze RuBP carboxylation or oxygenation (Hanson & Tabita, 2003; Tabita *et al.*, 2007) (Fig. 9, Fig. S9). In the GSB *Chlorobaculum tepidum*, a RLP has been implicated in sulfur metabolism (Hanson & Tabita, 2003), while in some Alpha-proteobacteria, RLP are involved in 5-methylthioadenosine-dependent growth (Tabita *et al.*, 2007). The remaining sequences all branch with characterized RuBisCO proteins, indicating they are involved in CO₂ assimilation *in situ*. In addition to the Type I and Type II RuBisCO identified in the ML-Gamma genomic bin, the metagenome contains three sequences affiliated with Type I RuBisCO (similar to *Thioalkalivibrio* spp. and members of the phyla Cyanobacteria and Chloroflexi) and two affiliated with Type II RuBisCO (similar to sequences of *Sulfuricella denitrificans*, a

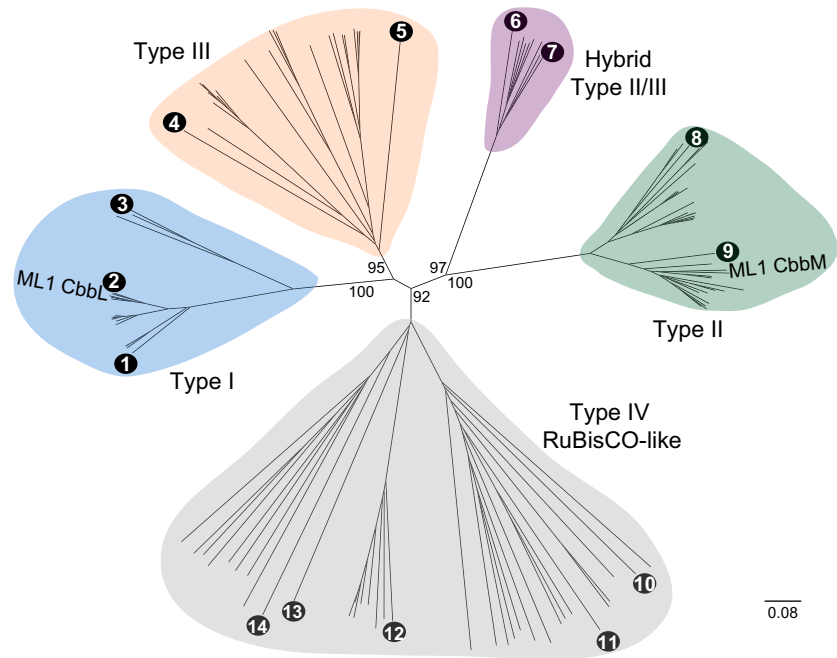


Fig. 9 Phylogenetic diversity of RuBisCO in the Mahoney Lake chemocline. Maximum-likelihood phylogenetic trees constructed from CbbL and CbbM sequences mined from the ML 7-m metagenome and the NCBI and IMG/M database. Numbers indicate full-length sequences mined from the ML 7-m metagenome (Table S6) and the full tree is shown in Fig. S9. CbbL and CbbM sequences of strain ML1 and ML-Gamma are identical and represented by ML1. Bootstrap support values based on 1000 bootstrap samplings are shown for each node.

sulfur-oxidizing Betaproteobacterium, and *R. rubrum*) (Fig. S9). Two additional sequences branch with the methanogen Type III RuBisCO and two sequences group together with the novel bacterial–archaeal hybrid TypeII/III sequences (Fig 8), which are putatively functionally analogous to Type III (Tabita *et al.*, 2007); these enzymes are thought to fix CO₂ and contribute to adenosine monophosphate (AMP) recycling (Wrighton *et al.*, 2012).

DISCUSSION

Identification of the dominant PSB in Mahoney Lake

The enrichment culture strain ML1 (*Chromatiaceae*; Overmann *et al.*, 1991) is very closely related to the highest-coverage population in the 7-m metagenome, indicating that strain ML1 is representative of the major PSB population. This PSB is believed to be the most abundant organism in the Mahoney Lake chemocline (Overmann *et al.*, 1991), and the similarity between our metagenome (sampled in 2008) and strain ML1 (enriched in 1989) confirms decadal stability of this population. The initial classification of strain ML1 as *Amoebobacter purpureus* was based on cell morphology, the presence of gas vesicles, okenone production, and its ability to use glucose, pyruvate, and acetate (Overmann *et al.*, 1991). Due to the re-classification of *A. purpureus* as a *Lamprocystis* species (Guyoneaud *et al.*, 1998), strain ML1 has been referred to as ‘*Lamprocystis purpurea* ML1’ (EMBL acc. nos. AJ006212, AY177752, Klepac-Ceraj *et al.*, 2012). However, initial analyses of the 16S SSU rRNA sequence suggested that the isolate had been misclassified (Coolen & Overmann, 1998), an obser-

vation bolstered by more recent analyses of the 16S rRNA and the *pufLM* genes, both of which indicated that strain ML1 is affiliated with the genus *Thiohalocapsa* (Tank *et al.*, 2009). Phylogenetic analyses presented here and elsewhere (Coolen & Overmann, 1998; Tank *et al.*, 2009) show this organism is most closely related to marine mat-forming members of the *Chromatiaceae*, such as *Thc. halophila* as well as *Halochromatium roseum* and *Hcb. glycolicum*. The 16S rRNA sequences from *Thc. halophila* (formerly *Thiocapsa halophila*; Caumette *et al.*, 1991) and strain ML1 are 98% identical.

Although some characteristics of strain ML1 – for example, the presence of gas vesicles and production of okenone – are also characteristic of *Lamprocystis* spp., strain ML1 exhibits higher salt tolerance than freshwater species (Imhoff, 2005). Moreover, gas vesicles and okenone are not taxonomically diagnostic. Gas vesicles have been observed in multiple genera of *Chromatiaceae*, including *Thiocapsa*, *Thiodictyon*, *Thiolamprovum*, *Thiopedia*, *Lamprocystis*, *Lamprobacter*, and *Halochromatium* (Kumar *et al.*, 2007). Okenone production is similarly irregularly distributed; it is mainly found in the gas vesicle containing genera *Thiocapsa*, *Thiopedia*, *Thiodictyon*, *Lamprobacter*, and *Thiolamprovum*, but it is also produced by the halophilic species *Hcb. roseum* (Kumar *et al.*, 2007) and the non-gas vacuolate relative of strain ML1, *Thc. halophila*. Based on the robust 16S rRNA gene analyses presented here, the clade containing strain ML1 and *Thc. halophila* is distinct from other major clades of planktonic PSB (e.g., *Lamprocystis* spp., *Chromatium* spp.) (Fig. 3), including ‘*Ca. Thiodictyon syntrophicum*’ Cad16, an abundant PSB that occurs in the compact chemocline of Lake Cadagno (Storelli *et al.*, 2013). As a result, we

suggest that strain ML1 is a potentially new species within the genus *Thiohalocapsa* and propose that it be renamed *Thiohalocapsa* sp. strain ML1.

A coupled sulfur cycle in a stable planktonic community

Metagenomic sequencing of the Mahoney Lake chemocline indicates this sulfur-rich ecosystem harbors functional redundancy in both the oxidative and reductive arms of the sulfur cycles (Fig. 10A). This functional redundancy could be a key factor in maintaining the apparent stability of the Mahoney Lake chemocline over the past ~30 years, or it may have developed as a result of such stability. The recovery of aerobic taxa such as Cyanobacteria and Epsilonproteobacteria may suggest fine-scale niche separation within the narrow phototrophic plate, the top of which is bounded by the oxic epilimnion. Alternatively, these taxa may represent biomass from the oxygenated layer, which

settled and was captured by the dense phototrophic plate. Both Cyanobacteria and Epsilonproteobacteria are capable of living in micro-oxic as well as sulfidic conditions (Jorgensen *et al.*, 1986; Campbell *et al.*, 2006). Conversely, the bottom of the plate intersects the highly sulfidic (35 mM) hypolimnion, an environment also rich in polysulfides, elemental sulfur, and other sulfur intermediates that may be amenable to sulfur disproportionation. Single genome bins (single populations) of sulfur oxidizers recovered in the present study contain multiple pathways for oxidation of sulfur compounds, implying flexibility and/or redundancy in their sulfur metabolism, a genomic characteristic observed in other sulfidic systems (Jones *et al.*, 2012). Isotope values of sulfur species in the chemoclines of other meromictic lakes, such as Fayetteville Green Lake, indicate that multiple processes contribute to sulfur oxidation and that these vary seasonally (Zerkle *et al.*, 2010). A similar seasonal variation may also occur in the

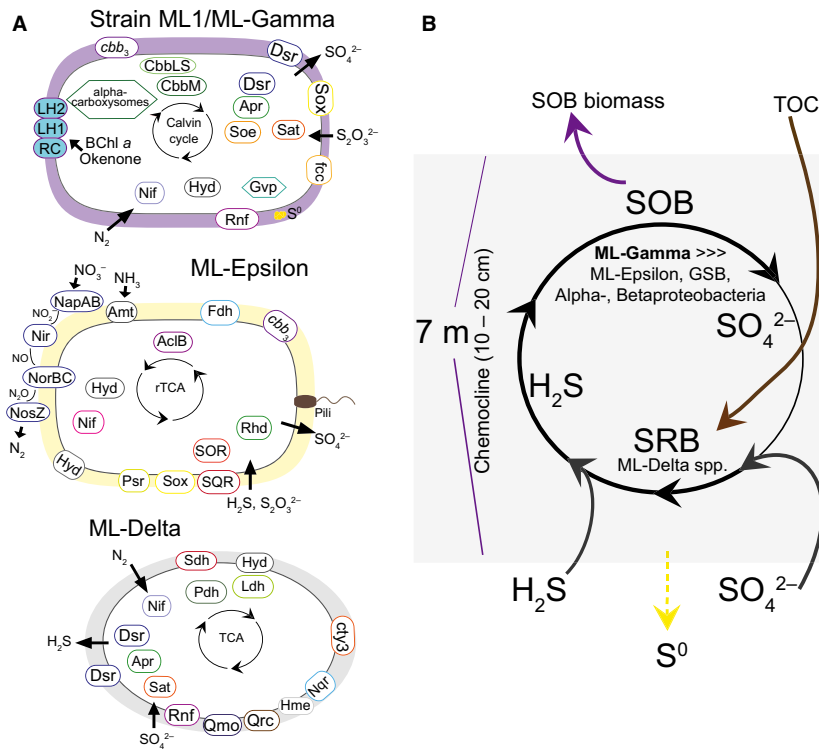


Fig. 10 Genomic models of the strain ML1/ML-Gamma, ML-Epsilon and the ML-Delta spp. (A) and putative model of the sulfur cycle in the Mahoney Lake chemocline (B). The loss of biomass (organic carbon and reduced sulfur, purple arrow) from the chemocline due to rafting, external organic carbon as a significant source of carbon to SRB in the chemocline (TOC, brown arrow) and loss of S⁰ to the lower layers of the lake (yellow arrow with dashes) are depicted. Further results and discussion of strain ML1/ML-Gamma, ML-Epsilon, and the ML-Delta spp. are provided in the SOM. AcilB, ATP-dependent citrate lyase; Amt, ammonia/ammonium transporter; Apr, adenylyl sulfate (APS) reductase; *cbb*₃, cytochrome *c* oxidase; Cyt3, cytochrome *c*₃; Dsr, dissimilatory sulfite reductase; Fdh, formate dehydrogenase; Gvp, gas vesicle proteins; Hyd, hydrogenase; Hme, heterodisulfide reductase-like menaquinol-oxidizing enzyme complex; LH, light-harvesting complex; Ldh, lactate dehydrogenase; NapAB, NO₃⁻ reductase; Nif, nitrogen fixation; NirS, NO₂⁻ reductase; NorBC, NO reductase; NosZ, N₂O reductase; Nqr, Na⁺-translocating NADH:quinone oxidoreductase; RC, photosynthetic reaction center; Pdh, pyruvate dehydrogenase; Psr, polysulfide reductase; rTCA, reductive TCA cycle; Rnf, quinone-interacting membrane-bound oxidoreductase complex; Qrc, quinone reductase complex; Rhd, rhodanese-related sulfurtransferase; Rnf, Rnf-electron transport complex; Sat, ATP-sulfurylase; Sox, sulfur oxidation proteins; Sdh, succinate dehydrogenase/fumarate reductase; Soe, sulfite-oxidizing enzyme complex; SOR, sulfite oxidoreductase; Sqr, sulfide:quinone oxidoreductase; SOB, sulfur-oxidizing bacteria; SRB, sulfate-reducing bacteria.

chemocline of Mahoney Lake, supporting functional redundancy in sulfur oxidation pathways and a diversity of sulfur-oxidizing species.

Historical data from Mahoney Lake show that the chemocline is relatively stable in both thickness and depth, although seasonal variation (e.g., autumnal die-off) affects the total cell abundance of *Thiohalocapsa* sp. strain ML1 (Overmann *et al.*, 1994). Other anaerobic phototrophic bacteria, including *Thiocapsa* sp. and GSB (Overmann *et al.*, 1991) as well as other autotrophs (e.g., ML-Epsilon; this study) and a large number of Alphaproteobacterial sequences (this study), are observed in the Mahoney Lake chemocline. However, in past studies, *Thiohalocapsa* sp. strain ML1 was responsible for >98% of primary productivity and, on average, 75% of the sulfide oxidation (Overmann *et al.*, 1991, 1996a). In contrast, the narrow chemocline of Lake Cadagno, a meromictic lake in Switzerland, hosts multiple populations of PSB, including *Chromatium*, *Lamprocystis*, *Thiocystis*, and *Thiodictyon* spp., as well as GSB of the genus *Chlorobium* (Bosshard *et al.*, 2000). These multiple species of PSB persist and remain active despite a recent increase in the abundance of *Chlorobium clathratiforme* (Decristophiris *et al.*, 2009; Gregersen *et al.*, 2009). In particular, 'Ca. Thiodictyon syntrophicum' strain Cad16 accounts for over 25% of primary production and is also a prominent source of CO₂ assimilation in the dark (Storelli *et al.*, 2013).

It is unclear what factors support the limited diversity among photoautotrophs in the Mahoney Lake chemocline. Several lines of evidence indicate that of the total *Thiohalocapsa* sp. strain ML1 biomass, a relatively small proportion (~15%), is physiologically active (Overmann *et al.*, 1991, 1994). The formation of buoyant aggregates of *Thiohalocapsa* sp. causes high cell numbers to accumulate within the chemocline (Overmann & Pfennig, 1992), and the high salinity of the hypolimnion and gas vacuolation of the cells inhibit sedimentation of these aggregates (Overmann *et al.*, 1991). The elevated levels of sulfate and especially sulfide (35 mM) in Mahoney Lake may create a very narrow niche space that precludes the majority of anoxygenic photoautotrophs. Specific adaptations including elevated salt tolerance and adaptation to low light (Overmann *et al.*, 1994) may enable *Thiohalocapsa* sp. strain ML1 to persist, albeit with very slow growth rates (Overmann *et al.*, 1991, 1994).

Phylogenetic analyses of the ribosomal protein S3 indicates multiple SRB spp. are present (Fig. S8A) in the Mahoney Lake chemocline. This record of SRB is consistent with the observation that sulfate reduction provides the majority of reducing equivalents for PSB-dominated primary production, and more specifically, that some of the sulfide is supplied *in situ* rather than by vertical mixing (Overmann *et al.*, 1996a). Redox oscillations at the oxic-anoxic boundary, as is common in sediment systems (Aller,

1998), are also observed both diurnally and seasonally in Mahoney Lake. The associated small vertical excursions of the chemocline (Hall & Northcote, 1990) may help maintain a diverse population of SRBs. Alternatively, varying levels of oxygen or sulfide tolerance among taxa could result in increased diversity (Baumgartner *et al.*, 2006).

Encompassing both of these ideas, the metagenomic data presented here contain genetic evidence for both heterotrophic and autotrophic SRB, implying that fluctuations in carbon supply play a role in maintaining multiple SRB spp. in the chemocline. SRB utilize organic compounds as electron sources for cellular metabolism. However, autotrophic growth of hydrogen-utilizing SRB via the Wood-Ljungdahl pathway has been demonstrated in some species, including close relatives of some of those recovered in the present study, that is, *Desulfobacteriaceae* (Rabus *et al.*, 2013). The strong density gradient in Mahoney Lake inhibits much of the *in situ* organic matter of the chemocline from entering the layers below (Overmann *et al.*, 1991), implying it is consumed by heterotrophs within the chemocline or lost to vertical mixing and/or buoyancy. During the autumnal die-off and upwelling of PSB biomass (Overmann *et al.*, 1994), however, there is minimal concomitant change in net activity in the chemocline. This implies that the total chemocline sulfate reduction rate is relatively stable, even if the loss of this organic matter affects the fractional balance of processes (autotrophic vs. heterotrophic carbon supply). This seasonal variation in organic carbon supply may support the multiple SRB spp. observed in the Mahoney Lake chemocline.

The energetic maintenance of euxinia

Although sulfate reduction and sulfide oxidation both occur in the Mahoney Lake chemocline, such a system is not self-sustaining. To satisfy the basic principles of thermodynamics and maintain a coupled oxidative and reductive sulfur cycle, exogenous input of electrons is a stoichiometric requirement (Overmann, 1997). All of the sulfide in Mahoney Lake must be derived from sulfate reduction, with the electrons provided by respiration of organic matter. However, oxygenic primary production in the epilimnion is not sufficient to supply these electrons in the form of phytoplanktonic carbon fixed *in situ*. Instead, most of the needed organic matter must come from the surrounding landscape (Overmann *et al.*, 1996a; Overmann, 1997).

Flux balance analysis confirms this principle. From data in Overmann *et al.* (1996a), we calculate an average diffusive vertical mixing of 9.2 mmol H₂S m⁻² day⁻¹ and 23 mmol SO₄²⁻ m⁻² day⁻¹ into the chemocline (described in the SOM). The H₂S flux is only sufficient to supply ~40% of measured oxidation rates (Overmann *et al.*,

1991), implying that SO_4^{2-} must be reduced *in situ* in the chemocline to supply the remainder of the H_2S . This is consistent with suggestions that input of allochthonous – and therefore necessarily oxygenic – organic matter is required to supply the extra flux of electrons needed to sustain sulfate reduction (Overmann, 1997). The question then remains: where does all the upwelled sulfur go? The epilimnion maintains a net SO_4^{2-} deficit (and zero H_2S) relative to the hypolimnion, while sediment trap data show that <0.5% of the total upward sulfur flux sinks out of the chemocline as S^0 (Overmann *et al.*, 1994). To close mass balance, the remainder must be rafted to the shoreline in association with the annual partial die-off and buoyant dispersal of the PSB from the chemocline (Overmann *et al.*, 1994)(Fig. 10B). This relationship implies that the net sulfur cycle in the lake primarily is $\text{SO}_4^{2-} \rightarrow \text{S}^{2-} (\text{H}_2\text{S}) \rightarrow \text{S}^0$, that is, the terminal sink for sulfur is significantly more reduced relative to its oxidized input (SO_4^{2-} from surrounding rocks). The ability to sustain net sulfate reduction in such a euxinic system, both in the chemocline and in the deeper hypolimnion, at first appears remarkable. However, simple free energy calculations under *in situ* conditions ($\Delta G = \Delta G^0 + RT \ln Q$) based on collated carbon and sulfur species concentrations from the literature (Northcote & Hall, 1983; Overmann *et al.*, 1991, 1996a, b) show that while Mahoney Lake represents an extreme end-member of euxinia with regard to sulfide concentrations, the $\text{H}_2\text{S}:\text{SO}_4^{2-}$ ratio in this system still is not high enough to thermodynamically inhibit sulfate reduction (Amend & Shock, 2001; Table S10, Fig. S10). The persistence of sulfate reduction under the extreme euxinic conditions Mahoney Lake implies that – at least under oxygenated atmospheres – SRB should be active in anoxic systems throughout Earth history, regardless of the degree of euxinia.

The redox stability and stable, poised conditions of Mahoney Lake likely result from its unique combination of high salinity, high sulfur concentrations, and high allochthonous carbon loading. The more dilute conditions of Lake Cadagno – another analogue for ocean euxinia – result in greater seasonal changes in fluxes, redox variability, and microbial community succession (Bosshard *et al.*, 2000; Del Don *et al.*, 2001; Decristophiris *et al.*, 2009; Gregeresen *et al.*, 2009). More generally, the concentration of free sulfide in any water column should scale directly with the extent of organic matter overloading, and the extreme case of Mahoney Lake undoubtedly is a factor in its biogeochemical and ecological stability.

Implications for biosignatures of photic zone euxinia

The chemocline of Mahoney Lake provides valuable insight into the geologic record of anoxygenic phototrophy. Because the habitat of phototrophic sulfur bacteria is

restricted – requiring micro-oxic or anoxic conditions, free sulfide, and sunlight – diagenetic products of the carotenoid okenone have been invoked as markers for shallow photic zone euxinia (Brocks *et al.*, 2005; Brocks & Schaefer, 2008). However, the synthesis of okenone is irregularly distributed among *Chromatiaceae*, both taxonomically and physiologically. Therefore, it is still debated whether diagenetic okenane in geologic sediments is of planktonic origin, or if it also may be derived from benthic mat communities (Meyer *et al.*, 2011) in which PSB are widespread and diverse (Imhoff, 2005). Mat- or benthic-derived isolates that produce okenone include *Halochromatium roseum* JA134 (Kumar *et al.*, 2007), *Thiocapsa marina* (Caumette *et al.*, 1985, 2004), and the closest relative of *Thiobhalocapsa* sp. strain ML1, *Thc. halophila* (Caumette *et al.*, 1991; Kumar *et al.*, 2007).

Okenone in ML sediments (Overmann *et al.*, 1993; Colen & Overmann, 1998) has been linked to the presence of *Thiobhalocapsa* sp. strain ML1 in the water column (Overmann *et al.*, 1991). The metagenomic sequencing and phylogenetic analyses presented here show that the only detectable okenone producer in the water column is indeed this species. It is not only closely related to *Thc. halophila*, but it also appears to be more closely related to the *Trv. winogradsky* isolated from the shoreline mats (Overmann *et al.*, 1992) than to typical planktonic members of the *Chromatiaceae*, such as ‘*Ca. Thiodictyon syntrophicum*’. The taxonomic similarity between *Thiobhalocapsa*, *Halochromatium*, and *Thiorhodovibrio* genera (Tank *et al.*, 2009; this work) suggests that a more general continuity between planktonic and benthic PSB communities exists, especially where oxygen minimum zones impinge on sediments within the photic zone. Similar to Mahoney Lake, the okenone-rich chemocline of meromictic Fayetteville Green Lake in New York hosts a diverse population of PSB, and phylogenetic analyses of clones from benthic and planktonic habitats in that lake suggest these niches host distinct PSB populations (Meyer *et al.*, 2011). Okenone-rich sediments derived from benthic mats underlying the oxic water column at Fayetteville Green Lake have challenged the current interpretation of okenone as an exclusive biomarker for planktonic PSB. In Mahoney Lake, the example of okenone production in the water column by a PSB strain that is a close relative of benthic species further highlights the difficulty in linking okenone uniquely to water column processes. While it remains assured that the recovery of okenane from ancient sediments is strong evidence for sunlit, sulfidic environments inhabited by PSB, the presence of okenane alone may not be sufficient evidence for photic zone euxinia in the open water column.

At the same time, in environments such as Mahoney Lake where planktonic PZE clearly is present, chemoautotrophic sulfide oxidation and sulfate reduction also should be suspected as co-occurring reactions in an active sulfur

cycle, mediated by a wide variety of micro-organisms. This is distinct from a cryptic sulfur cycle in which no net sulfur cycle redox processes occur (Canfield *et al.*, 2010), but rather is an expected consequence of the water column anoxia associated with high organic carbon fluxes. Under this model, both PZE and water column sulfate cycling necessarily depend on oxygenic photosynthesis to supply electrons. This implies that PZE is only possible in high productivity, low and moderate pO_2 oceans (including ocean basins with restricted circulation). Episodes of euxinia in Earth history should require a confluence of all of these conditions, perhaps helping to explain their apparent rarity (e.g., Meyer & Kump, 2008; Johnston *et al.*, 2009; Canfield, 2013; Leavitt *et al.*, 2013).

ACKNOWLEDGMENTS

This project was funded by the National Science Foundation (NSF EAR-0525503 to A.P. and J.L.M.) and the Gordon and Betty Moore Foundation (to A.P.). T.L.H. graciously acknowledges support from the NAI Postdoctoral Program. W.M. was supported by a Marie Curie International Outgoing Fellowship within the 7th European Community Framework Programme. Funds for sample collection and the complementary geochemical context were provided by the NASA Exobiology Program (T.W.L.). Work in the laboratory of D.A.B. on genomes of chlorophototrophic organisms was supported by the National Science Foundation (MCB-0523100) and NASA (NNX09AM87G).

REFERENCES

- Aller RC (1998) Mobile deltaic and continental shelf muds as suboxic, fluidized bed reactors. *Marine Chemistry* **61**, 143–155.
- Altschul SF, Gish W, Miller W, Myers EW, Lipman DJ (1990) Basic local alignment search tool. *Journal of Molecular Biology* **215**, 403–410.
- Amend JP, Shock ES (2001) Energetics of overall metabolic reactions of thermophilic and hyperthermophilic Archaea and Bacteria. *FEMS Microbiology Reviews* **25**, 175–243.
- Anisimova M, Gascuel O (2006) Approximate likelihood-ratio test for branches: a fast, accurate, and powerful alternative. *Systems Biology* **55**, 539–552.
- Aziz RK, Bartels D, Best AA, DeJongh M, Disz T, Edwards RA, Formsma K, Gerdes S, Glass EM, Kubal M, Meyer F, Olsen GJ, Olson R, Osterman AL, Overbeek RA, McNeil LK, Paarmann D, Paczian T, Parrello B, Pusch GD, Reich C, Stevens R, Vassieva O, Vonstein V, Wilke A, Zagnitko O (2008) The RAST Server: rapid annotations using subsystems technology. *BMC Genomics* **9**, 75.
- Baumgartner LK, Reid RP, Dupraz C, Decho AW, Buckley DH, Spear JR, Przekop KM, Visscher PT (2006) Sulfate reducing bacteria in microbial mats: changing paradigms, new discoveries. *Sedimentary Geology* **185**, 131–145.
- Biegel E, Müller V, Schmidt S, Gonzalez JM (2011) Biochemistry, evolution and physiological function of the Rnf complex, a novel ion-motive electron transport complex in prokaryotes. *Cellular and Molecular Life Sciences* **68**, 613–634.
- Bosshard PP, Santini Y, Grütter D, Stettler R, Bachofen R (2000) Bacterial diversity and community composition in the chemocline of the meromictic alpine Lake Cadagno as revealed by 16S rDNA analysis. *FEMS Microbiology Ecology* **31**, 173–182.
- Brocks JJ, Love GD, Summons RE, Knoll AH, Logan GA, Bowden SA (2005) Biomarker evidence for green and purple sulphur bacteria in a stratified Palaeoproterozoic sea. *Nature* **437**, 866–870.
- Brocks JJ, Schaeffer P (2008) Okenane, a biomarker for purple sulfur bacteria (Chromatiaceae), and other new carotenoid derivatives from the 1640 Ma Barney Creek Formation. *Geochimica et Cosmochimica Acta* **72**, 1396–1414.
- Bühning SI, Sievert SM, Jonkers HM, Ertefai T, Elshahed MS, Krumholz LR, Hinrichs K-U (2011) Insights into chemotaxonomic composition and carbon cycling of phototrophic communities in an artesian sulfur-rich spring (Zodlone, Oklahoma, USA), a possible analog for ancient microbial mat systems. *Geobiology* **9**, 166–179.
- Campbell BJ, Engel AS, Porter ML, Takai K (2006) The versatile ϵ -proteobacteria: key players in sulphidic habitats. *Nature Reviews Microbiology* **4**, 458–468.
- Canfield DE (1998) A new model for Proterozoic ocean chemistry. *Nature* **396**, 450–453.
- Canfield DE (2013) Sulfur isotopes in coal constrain the evolution of the Phanerozoic sulfur cycle. *Proceedings of the National Academy of Science* **110**, 8443–8446.
- Canfield DE, Stewart FJ, Thamdrup B, De Brabandere L, Dalsgaard T, Delong EF, Revsbech NP, Ulloa O (2010) A cryptic sulfur cycle in oxygen-minimum-zone waters off the Chilean coast. *Science* **330**, 1375–1378.
- Caumette P, Schmidt K, Biebl H, Pfennig N (1985) Characterization of a *Thiocapsa* strain containing okenone as major carotenoid. *Systematic and Applied Microbiology* **6**, 132–136.
- Caumette P, Baulaigue R, Matheron R (1991) *Thiocapsa halophila* sp. nov., a new halophilic phototrophic sulfur strain. *Archives of Microbiology* **155**, 170–176.
- Caumette P, Guyoneaud R, Imhoff JF, Stiling J, Gorlenko V (2004) *Thiocapsa marina* sp. nov., a novel, okenone-containing, purple sulfur bacterium isolated from brackish coastal and marine environments. *International Journal of Systematic and Evolutionary Microbiology* **54**, 1031–1036.
- Coolen MJL, Overmann J (1998) Analysis of subfossil molecular remains of purple sulfur bacteria in a lake sediment. *Applied and Environmental Microbiology* **64**, 4513–4521.
- Dahl C, Schulte A, Stockdreher Y, Hong C, Grimm F, Sander J, Kim R, Kim S-H, Shin DH (2008) Structural and molecular genetic insight into a wide-spread bacterial sulfur oxidation pathway. *Journal of Molecular Biology* **384**, 1287–1300.
- Dahl C, Franz B, Hensen D, Kesselheim A, Ziggan R (2013) Sulfite oxidation in the purple sulfur bacterium *Allochromatium vinosum*: identification of SoeABC as a major player and relevance of SoxYZ in the process. *Microbiology* **159**, 2626–2638.
- Darriba D, Taboada G, Doallo R, Posada D (2012) jModelTest 2: more models, new heuristics and parallel computing. *Nature Methods* **9**, 772.
- Decristophiris PMA, Peduzzi S, Ruggeri-Bernardi N, Hahn D, Tonolla M (2009) Fine scale analysis of shifts in bacterial community structure in the chemocline of meromictic Lake Cadagno, Switzerland. *Journal of Limnology* **68**, 16–24.

- Del Don C, Hanselmann KW, Peduzzi R, Bachofen R (2001) The meromictic alpine Lake Cadagno: orographical and biogeochemical description. *Aquatic Sciences* **63**, 70–90.
- Dick JD, Andersson AF, Baker BJ, Simmons SL, Thomas BC, Yelton AP, Banfield JF (2009) Community-wide analysis of microbial genome sequence signatures. *Genome Biology* **10**, R85.
- Finster K (2008) Microbiological disproportionation of inorganic sulfur compounds. *Journal of Sulfur Chemistry* **29**, 281–292.
- Frigaard NU, Bryant DA (2008) Genomic insights into the sulfur metabolism of phototrophic green sulfur bacteria. In *Sulfur Metabolism in Phototrophic Organisms* (eds Hell R, Dahl C, Knaff DB, Leustak T). Springer Science, New York, pp. 337–355.
- Frigaard NU, Dahl C (2009) Sulfur metabolism in phototrophic sulfur bacteria. *Advances in Microbial Physiology* **54**, 103–200.
- Ghosh W, Dam B (2009) Biochemistry and molecular biology of lithotrophic sulfur oxidation by taxonomically and ecologically diverse bacteria and archaea. *FEMS Microbiology Reviews* **33**, 999–1043.
- Gregersen LH, Habicht KS, Peduzzi S, Tonolla M, Canfield DE, Miller M, Cox RP, Frigaard N-U (2009) Dominance of a clonal green sulfur bacterial population in a stratified lake. *FEMS Microbiology Ecology* **70**, 30–41.
- Gregersen LH, Bryant DA, Frigaard N-U (2011) Mechanisms and evolution of oxidative sulfur metabolism in green sulfur bacteria. *Frontiers in Microbiology* **2**, 116.
- Grein F, Pereira IAC, Dahl C (2010) Biochemical characterization of individual components of the *Allochromatium vinosum* DsrMKJOP transmembrane complex aids understanding of complex function *in vivo*. *Journal of Bacteriology* **24**, 6369–6377.
- Grein F, Ramos AR, Venceslau SS, Pereira IAC (2013) Unifying concepts in anaerobic respiration: insights from dissimilatory sulfur metabolism. *Biochimica et Biophysica Acta* **1827**, 145–160.
- Grice K, Cao CQ, Love GD, Bottcher ME, Twitchett RJ, Grosjean E, Summons RE, Turgeon SC, Dunning W, Jin YG (2005) Photic zone euxinia during the Permian-Triassic superanoxic event. *Science* **307**, 706–709.
- Grimm F, Franz B, Dahl C (2008) Thiosulfate and sulfur oxidation in purple sulfur bacteria. In *Microbial Sulfur Metabolism* (eds Dahl C, Friedrich CG). Springer-Verlag, Heidelberg, pp. 101–116.
- Guyoneaud R, Söling J, Petri R, Matheron R, Caumette P, Pfennig N, Imhoff JF (1998) Taxonomic rearrangements of the genera *Thiocapsa* and *Amoebobacter* on the basis of 16S rDNA sequence analyses, and description of *Thiolamprovum* gen. nov. *International Journal of Systematic and Evolutionary Biology* **48**, 957–964.
- Hadas O, Pinkas R, Erez J (2001) High chemoautotrophic primary production in Lake Kinneret, Israel: a neglected link in the carbon cycle of the lake. *Limnology and Oceanography* **46**, 1968–1976.
- Hall KJ, Northcote TG (1990) Production and decomposition processes in a saline meromictic lake. *Hydrobiologia* **197**, 115–128.
- Handley KM, VerBerkmoes NC, Steefel CI, Williams KH, Sharon I, Miller C, Frischkorn KR, Chourey K, Thomas BC, Shah MB, Long PE, Hettich RL, Banfield JF (2012) Biostimulation induces syntrophic interactions that impact C, S, and N cycling in a sediment microbial community. *ISME Journal* **7**, 800–816.
- Hanson TE, Tabita FR (2003) Insights into the stress response and sulfur metabolism revealed by proteome analysis of a *Chlorobium tepidum* mutant lacking the Rubisco-like protein. *Photosynthetic Research* **78**, 231–248.
- Hedderich R, Klimmek O, Kröger A, Dirmeier R, Keller M, Stetter KO (1998) Anaerobic respiration with elemental sulfur and with disulfides. *FEMS Microbiology Reviews* **22**, 353–381.
- Hensen D, Sperling D, Trüper HG, Brune DC, Dahl C (2006) Thiosulfate oxidation in the phototrophic sulphur strain *Allochromatium vinosum*. *Molecular Microbiology* **62**, 794–810.
- Holkenbrink C, Ocón Barbas S, Møllerup A, Otaki H, Frigaard N-U (2011) Sulfur globule oxidation in green sulfur bacteria is dependent on the dissimilatory sulfite reductase system. *Microbiology* **157**, 1229–1239.
- Hug LA, Castelle CJ, Wrighton KC, Thomas BC, Sharon I, Frischkorn KR, Williams KH, Tringe SG, Banfield JF (2013) Community genomic analyses constrain the distribution of metabolic traits across the Chloroflexi phylum and indicate roles in sediment carbon cycling. *Microbiome* **1**, 22.
- Huson DH, Mitra S, Weber N, Ruscheweyh H, Schuster SC (2011) Integrative analysis of environmental sequences using MEGAN4. *Genome Research* **21**, 1552–1560.
- Imhoff JF (2001) Transfer of *Pfennigia purpurea* Tindall 1999 (*Amoebobacter purpureus* Eichler and Pfennig 1988) to the genus *Lamprocystis* as *Lamprocystis purpurea* comb. nov. *International Journal of Systematic and Evolutionary Microbiology* **51**, 1699–1701.
- Imhoff JF (2005) Order I. Chromatiales ord. nov. In *Bergey's Manual of Systematic Bacteriology* (eds Brenner DJ, Krieg NR, Stanley JT), 2nd ed., vol 2., part B. *The Gammaproteobacteria*. Springer, New York, pp. 1–3.
- Inagaki F, Takai K, Kobayashi H, Nealson KH, Horikoshi K (2003) *Sulfurimonas autotrophica* gen. nov., sp. nov., a novel sulfur-oxidizing ϵ -proteobacterium isolated from hydrothermal sediments in the Mid-Okinawa Trough. *International Journal of Systematic and Evolutionary Microbiology* **53**, 1801–1805.
- Iverson V, Morris RM, Frazar CD, Berthiaume CT, Morales RL, Armbrust EV (2012) Untangling genomes from metagenomes: revealing an uncultured class of marine Euryarchaeota. *Science* **335**, 587–590.
- Jeong HS, Jouanneau Y (2000) Enhanced nitrogenase activity in strains of *Rhodobacter capsulatus* that overexpress the *rnf* genes. *Journal of Bacteriology* **182**, 1208–1214.
- Johnston DT, Wolfe-Simon F, Pearson A, Knoll AH (2009) Anoxygenic photosynthesis modulated Proterozoic oxygen and sustained Earth's middle age. *Proceedings of the National Academy of Sciences of the United States of America* **106**, 16925–16929.
- Jones DS, Albrecht HL, Dawson KS, Schaperdorth I, Freeman KH, Pi Y, Pearson A, Macalady JL (2012) Community genomic analysis of an extremely acidophilic sulfur-oxidizing biofilm. *ISME Journal* **6**, 158–170.
- Jørgensen BB, Cohen Y, Revsbech NP (1986) Transition from anoxygenic to oxygenic photosynthesis in a *microcoleus chthonoplastes* cyanobacterial mat. *Applied and Environmental Microbiology* **51**, 408–417.
- Klepac-Ceraj V, Hayes CA, Gilhooly WP, Lyons TW, Kolter R, Pearson A (2012) Microbial diversity under extreme euxinia: Mahoney Lake, Canada. *Geobiology* **10**, 223–235.
- Kumar PA, Srinivas TNR, Sasikala Ch, Ramana ChV (2007) *Halochromatium roseum* sp. nov., a non-motile phototrophic gammaproteobacterium with gas vesicles, and amended description of the genus *Halochromatium*. *International Journal of Systematic and Evolutionary Microbiology* **57**, 2110–2113.
- Leavitt WD, Halevy I, Bradley AS, Johnston DT (2013) Influence of sulfate reduction rates on the Phanerozoic sulfur isotope

- record. *Proceedings of the National Academy of Sciences of the United States of America* **110**, 11244–11249.
- Li H, Durbin R (2009) Fast and accurate short read alignment with Burrows-Wheeler Transform. *Bioinformatics* **25**, 1754–1760.
- Lohse M, Bolger AM, Nagel A, Fernie AR, Lunn JE, Stitt M, Usadel B (2012) RobiNA: a user-friendly, integrated software solution for RNA-Seq-based transcriptomics. *Nucleic Acids Research* **40**, W622–W627.
- Meuser JE, Baxter BK, Spear JR, Peters JW, Posewitz MC, Boyd ES (2013) Contrasting patterns of community assembly in the stratified water column of Great Salt Lake, Utah. *Microbial Ecology* **66**, 268–280.
- Meyer KM, Kump LR (2008) Oceanic euxinia in Earth history: causes and consequences. *Annual Review of Earth and Planetary Sciences* **36**, 251–288.
- Meyer KM, Macalady JL, Fulton JM, Kump LR, Schaperdoth I, Freeman KH (2011) Carotenoid biomarkers as an imperfect reflection of the anoxygenic phototrophic community in meromictic Fayetteville Green Lake. *Geobiology* **9**, 321–329.
- Miller CS, Baker BJ, Thomas BC, Singer SW, Banfield JF (2011) EMIRGE: reconstruction of full-length ribosomal genes from microbial community short read sequencing data. *Genome Biology* **12**, R44.
- Northcote TG, Hall KJ (1983) Limnological contrasts and anomalies in 2 adjacent saline lakes. *Hydrobiologia* **105**, 179–194.
- Northcote TG, Halsey TG (1969) Seasonal changes in the limnology of some meromictic lakes in southern British Columbia. *Journal of Fisheries Research Board of Canada* **26**, 1763–1787.
- Ogawa T, Furusawa T, Nomura R, Seo D, Hosoya-Matsuda N, Sakurai H, Inoue K (2008) SoxAX binding protein, a novel component of the thiosulfate-oxidizing multienzyme system in the green sulfur bacterium *Chlorobium tepidum*. *Journal of Bacteriology* **190**, 6097–6110.
- Oliveira TF, Vonrhein C, Matia PM, Venceslau SS, Pereira IAC, Archer M (2008) The crystal structure of *Desulfovibrio vulgaris* dissimilatory sulfite reductase bound to DsrC provides novel insights into the mechanism of sulfate respiration. *Journal of Biological Chemistry* **283**, 34141–34149.
- Overmann J, Pfennig N (1989) *Pelodictyon phaeoclatratiforme* sp. nov., a new brown-colored member of the *Chlorobiaceae* forming net-like colonies. *Archives of Microbiology* **152**, 401–406.
- Overmann J, Beatty JT, Hall KJ, Pfennig N, Northcote TG (1991) Characterization of a dense, purple sulfur bacterial layer in a meromictic salt lake. *Limnology and Oceanography* **36**, 846–859.
- Overmann J, Fischer U, Pfennig N (1992) A new purple sulfur bacterium from saline littoral sediments, *Thiorhodovibrio winogradskyi* gen. nov. and sp. nov. *Archives of Microbiology* **157**, 329–335.
- Overmann J, Pfennig N (1992) Bouyancy regulation and aggregate formation in *Amoebobacter purpureus* from Mahoney Lake. *FEMS Microbiology Letters* **101**, 67–79.
- Overmann J, Sandmann G, Hall KJ, Northcote TG (1993) Fossil carotenoids and paleolimnology of meromictic Mahoney Lake, British Columbia, Canada. *Aquatic Sciences* **55**, 31–39.
- Overmann J, Beatty JT, Hall KJ (1994) Photosynthetic activity and population dynamics of *Amoebobacter purpureus* in a meromictic saline lake. *FEMS Microbiology Ecology* **15**, 309–320.
- Overmann J, Beatty JT, Krouse HR, Hall KJ (1996a) The sulfur cycle in the chemocline of a meromictic salt lake. *Limnology and Oceanography* **41**, 147–156.
- Overmann J, Beatty JT, Hall KJ (1996b) Purple sulfur bacteria control the growth of aerobic heterotrophic bacterioplankton in a meromictic salt lake. *Applied and Environmental Microbiology* **62**, 3251–3258.
- Overmann J (1997) Mahoney Lake: a case study of the ecological significance of phototrophic purple sulfur bacteria. In *Advances in Microbial Ecology* (ed. Jones JG). Plenum Press, New York, pp. 251–288.
- Pancost RD, Crawford N, Magness S, Turner A, Jenkyns HC, Maxwell JR (2004) Further evidence for the development of photic-zone euxinic conditions during Mesozoic oceanic anoxic events. *Journal of the Geological Society* **161**, 353–364.
- Peduzzi S, Storelli N, Weslh A, Peduzzi R, Hahd D, Perret X, Tonolla M (2012) *Candidatus* “Thiodictyon syntrophicum”, sp. nov., a new purple sulfur strain isolated from the chemocline of Lake Cadagno forming aggregates and specific associations with *Desulfocapsa* sp. *Systematic and Applied Microbiology* **35**, 139–144.
- Peng Y, Leung HCM, Yiu SM, Chin FYL (2012) IDBA-UD: a *de novo* assembler for single-cell and metagenomic sequencing data with highly uneven depth. *Bioinformatics* **28**, R69.
- Pereira IAC, Ramos AR, Grein F, Marques MC, da Silva MS, Venceslau S (2011) A comparative genomic analysis of energy metabolism in sulfate reducing bacteria and archaea. *Frontiers in Microbiology* **2**, 1.
- Pitcher RS, Watmough NJ (2004) The bacterial cytochrome cbb3 oxidases. *Biochimica et Biophysica Acta* **1655**, 388–399.
- Rabus R, Hansen TA, Widdel F (2013) Dissimilatory sulfate- and sulfur-reducing prokaryotes. In *The Prokaryotes – Prokaryotic Physiology and Biochemistry* (eds Rosenbrugg E, DeLong EF, Lory S, Stackebrandt E, Thompson F). Springer-Verlag, Heidelberg, pp. 309–404.
- Raes J, Korbel JO, Lercher MJ, von Mering C, Bork P (2007) Prediction of effective genome size in metagenomic samples. *Genome Biology* **8**, R10.
- Reinhard CT, Planavsky NJ, Robbins LJ, Partin CA, Gill BC, Lalonde SV, Bekker A, Konhauser KO, Lyons TW (2013) Proterozoic ocean redox and biogeochemical stasis. *Proceedings of the National Academy of Sciences of the United States of America* **110**, 5357–5362.
- Sander J, Engels-Schwarzlose S, Dahl C (2006) Importance of the DsrMKJOP complex for sulfur oxidation in *Allochromatium vinosum* and phylogenetic analysis of related complexes in other prokaryotes. *Archives of Microbiology* **186**, 357–366.
- Schauder R, Preub A, Jetten M, Fuchs G (1989) Oxidative and reductive acetyl CoA/carbon monoxide dehydrogenase pathway in *Desulfostrain autotrophicum*. *Archives of Microbiology* **151**, 84–89.
- Shah N, Tang H, Doak TG, Ye Y (2010) Comparing bacterial communities inferred from 16S rRNA gene sequencing and shotgun metagenomics. *Bioinformatics Proceedings of the Pacific Symposium* pp. 165–176.
- Simon J, Klotz MG (2013) Diversity and evolution of bioenergetic systems involved in microbial nitrogen compound transformations. *Biochimica et Biophysica Acta* **1827**, 114–135.
- Sorek R, Zhu Y, Creevey CJ, Francino MP, Bork P, Rubin EM (2007) Genome-wide experimental determination of barriers to horizontal gene transfer. *Science* **318**, 1449–1452.
- Storelli N, Peduzzi S, Saad MM, Frigaard N-U, Perret X, Tonolla M (2013) CO₂ assimilation in the chemocline of Lake Cadagno is dominated by a few types of phototrophic purple sulfur bacteria. *FEMS Microbiology Ecology* **84**, 421–432.

- Swofford DL (2001) *Paup: Phylogenetic Analysis Using Parsimony (and Other Methods)*, 4.0b10 edn. Sinauer Associate, Sunderland, MA.
- Tabita FR, Hanson TE, Li H, Statgopan S, Singh J, Chan S (2007) Function, structure, and evolution of the RubisCO-like proteins and their RubisCO homologs. *Microbiology and Molecular Biology Reviews* **71**, 576–599.
- Tank M, Thiel V, Imhoff JE (2009) Phylogenetic relationship of phototrophic purple sulfur bacteria according to *pufL* and *pufM* genes. *International Microbiology* **12**, 175–185.
- Tuschak C, Leung MM, Beatty JT, Overmann J (2005) The *puf* operon of the purple sulfur bacterium *Amoebobacter purpureus*, transcription and phylogenetic analysis. *Archives of Microbiology* **138**, 431–443.
- Tyson GW, Chapman J, Hugenholtz P, Allen EE, Ram RJ, Richardson PM, Solovvey VV, Rubin EM, Rokhsar DS, Banfield JF (2004) Community structure and metabolism through reconstruction of microbial genomes from the environment. *Nature* **428**, 37–43.
- Vogl K, Bryant DA (2011) Elucidation of the biosynthetic pathway for okenone in *Thiodictyon* sp. CAD16 leads to the discovery of two novel carotene ketolases. *Journal of Biological Chemistry* **286**, 38521–38532.
- Vogl K, Bryant DA (2012) Biosynthesis of the biomarker okenone: χ -ring formation. *Geobiology* **10**, 205–215.
- Voorhies AA, Biddanda BA, Kendall T, Jain S, Marcus DN, Nold SC, Sheldon ND, Dick GJ (2012) Cyanobacterial life at low O₂: community genomics and function reveal metabolic versatility and extremely low diversity in a Great Lakes sinkhole mat. *Geobiology* **10**, 250–267.
- Whitaker R, Banfield J (2006) Population genomics in natural microbial communities. *Trends in Ecology and Evolution* **21**, 508–516.
- Wrighton KC, Thomas BC, Sharon I, Miller CS, Castelle CJ, VerBerkmoes NC, Wilkins MJ, Hettich RL, Lipton MS, Williams KH, Long PE, Banfield JF (2012) Fermentation, hydrogen, and sulfur metabolism in multiple uncultivated bacterial phyla. *Science* **337**, 1661–1665.
- Wu M, Eisen JA (2008) A simple, fast, and accurate method of phylogenomic inference. *Genome Biology* **9**, R151.
- Zerbino DR, Birney E (2008) Velvet: algorithms for de novo short read assembly using de Bruijn graphs. *Genome Research* **18**, 821–829.
- Zerkle AL, Kamyshny A Jr, Kump LR, Farquhar J, Oduro H, Arthur MA (2010) Sulfur cycling in a stratified euxinic lake with moderately high sulfate: constraints from quadruple S isotopes. *Geochimica et Cosmochimica Acta* **74**, 4953–4970.
- Zopf J, Ferdelman TG, Fossing G (2004) Distribution and fate of sulfur intermediates—sulfite, tetrathionate, thiosulfate, and elemental sulfur—in marine sediments. In *Sulfur Biogeochemistry: Past and Present* (eds Amend JP, Edwards KJ, Lyons TW). The Geological Society of America, Boulder, CO, pp. 97–117.

SUPPORTING INFORMATION

Additional Supporting Information may be found in the online version of this article:

Data S1 Supplementary methods and results.

Table S1 Metagenome summary statistics.

Table S2 Marker genes used to evaluate genome completion of the isolate genome, strain ML1, and the ML-Gamma and ML-Epsilon genomic bins.

Table S3 Marker genes used to evaluate genome completion of the Delta-proteobacteria community genome bins.

Table S4 Orthologous group markers and their abundance used to estimate the number of complete genomes in the Deltaproteobacteria community genome bins.

Table S5 Single-copy phylogenetic marker genes used for taxonomic assignment of the ML-Gamma and the ML-Epsilon genomic bins.

Table S6 List of genes from the Mahoney Lake 7-m metagenome identified and included in functional gene phylogenetic analyses.

Table S7 Number and taxonomic affiliation of key genes involved in the sulfur cycle.

Table S8 Accession numbers of the Sqr sequences included in Fig. S6.

Table S9 Summary of community genomic bins of Deltaproteobacteria spp.

Table S10 Calculations for $\Delta G = \Delta G^0 + RT \ln Q$ at 18°C for selected sulfur redox reactions *in situ*.

Table S11 List of organisms from which NifH/VnfH/AnfH were identified and included in the phylogenetic analysis of NifH/VnfH/AnfH identified in from the Mahoney Lake 7-m metagenome.

Fig. S1 ESOM (repeating-tiled view) bins of the tetranucleotide frequency signatures of the 7-m metagenome with bins of interest indicated.

Fig. S2 The estimated number of SRB genomes recovered from the Mahoney Lake metagenome.

Fig. S3 Maximum likelihood phylogenetic tree of 19 concatenated single-copy ribosomal proteins showing the placement of the strain ML1 and ML-Gamma compared to closely related Gammaproteobacteria spp. for which genome sequences are available.

Fig. S4 Phylogenetic diversity of RuBisCO in the Mahoney Lake chemocline. Maximum likelihood phylogenetic trees constructed from CbbL and CbbM sequences mined from the ML 7-m metagenome and the NCBI and IMG/M database.

Fig. S5 Phylogenetic diversity of the nitrogenase Fe protein in the Mahoney Lake chemocline.

Fig. S6 Maximum likelihood phylogenetic tree of translated genes sequences encoding okenone C-4/4' ketolase (CruO), okenone accessory ketolase (CruS), carotenoid desaturase (CrtD) and methoxyneurosporine dehydrogenases (CrtD/CrtI family homologs).

Fig. S7 Maximum likelihood phylogenetic tree of Sqr. Sequences were mined from the 7-m metagenome (Table S6) and the NCBI and IMG/M database.

Fig. S8 Taxonomic diversity of SRB-affiliated SP3 proteins and the Predicted role of the ML SRB spp. in the sulfur cycle.

Fig. S9 Phylogenetic diversity of RuBisCO in the Mahoney Lake chemocline. Maximum likelihood phylogenetic trees constructed from CbbL and CbbM sequences mined from the ML 7-m metagenome and the NCBI and IMG/M database.

Fig. S10 Calculated values for $\Delta G = \Delta G^0 + RT \ln Q$ at 18 °C for selected sulfur redox reactions *in situ*, at depths above, within, and below the purple chemocline.