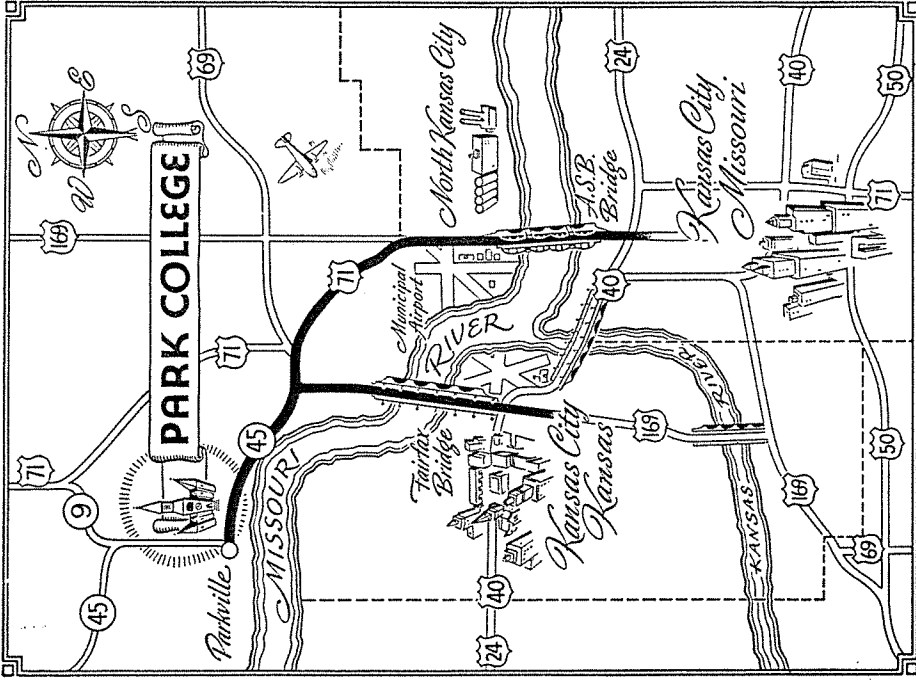
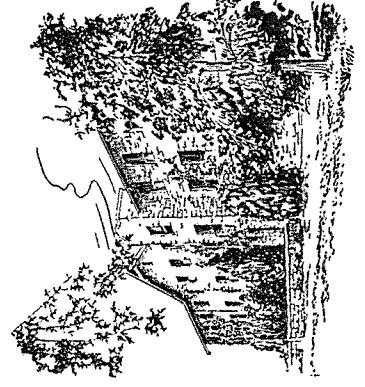


Welcome to

PARK COLLEGE

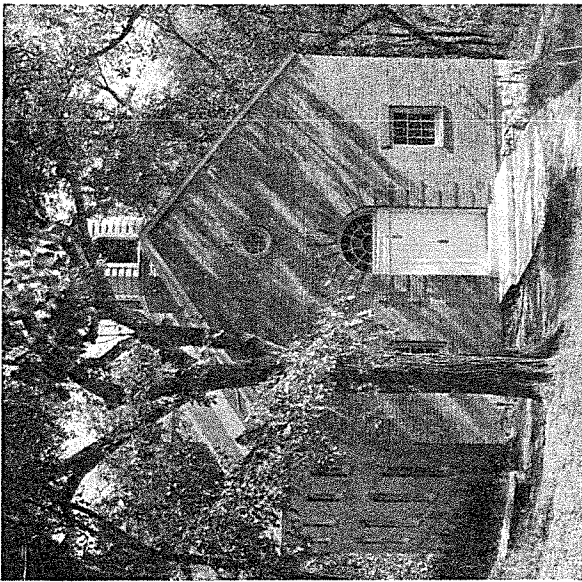
Parkville, Missouri



TRANSPORTATION

Parkville is served by the Chicago, Burlington and Quincy Railroad and by two bus lines: Continental Trailways and Greyhound. The Kansas City station for Continental is at 11th Street and McGee; the Greyhound at 10th Street and McGee.

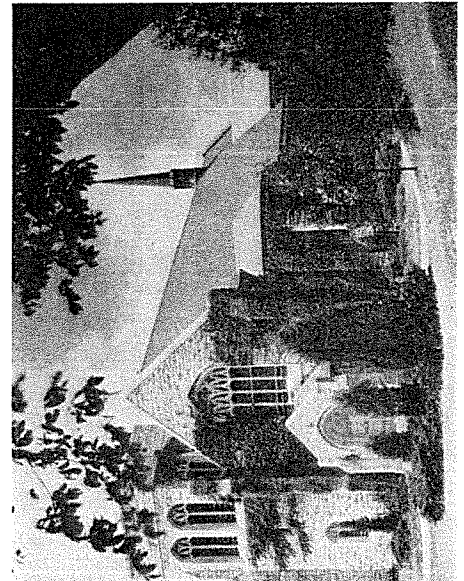
The Kansas City Municipal Airport is but a 10-minute drive from Parkville. Consult your local travel agent for schedules.

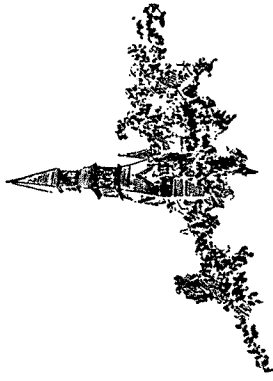


For Your Enjoyment

Park College, only nine miles from Kansas City, combines the advantages of a rural atmosphere with the many cultural advantages of a metropolitan center. For baseball fans there is the added attraction of the Kansas City Athletics in spring and summer months.

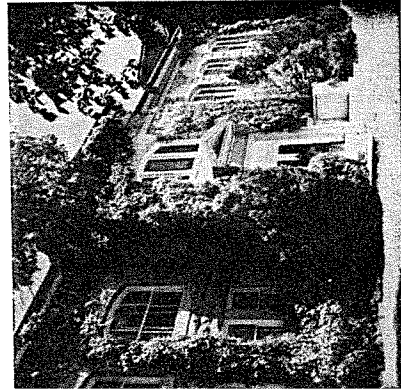
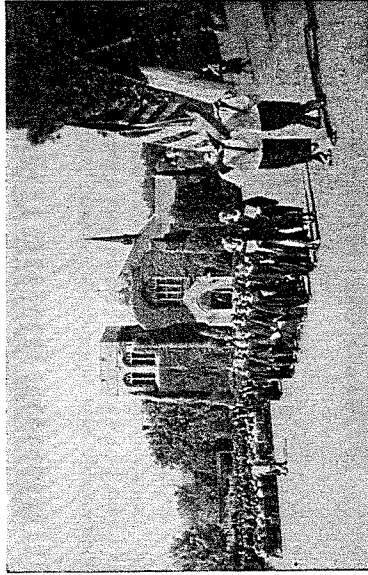
A large swimming pool in the college gymnasium, hard-surfaced tennis courts, the athletic field, miles of woodland trails, scenic picnic and camp sites are among the campus recreation facilities.





Financial Assistance

There are a variety of means available to the worthy student at Park College whereby he may be assisted in the financing of his college education. Scholarships, grants-in-aid, special student employment, extended work privileges, and loan funds are all possible avenues of assistance.



**OVER 250 COURSES
ARE INCLUDED IN
OUR CURRICULUM**

*Here are a few of
our offerings*

Abnormal Psychology
Advanced Drawing and Lithography
American Ideas and Institutions
American Literature
American National Government
American State and Local Government
Anatomy
Applied Psychology
Appreciation of Music
Archery, Golf, Tennis
Astronomy
Atomic Physics
Bacteriology
Biology
Botany
Badminton, Table Tennis
Business Administration
Business Statistics
Chapel Choir
Chemistry
Conducting
Concert Band
Consumer Education
Contemporary Philosophy
Counterpoint
Costume Design
Dramatic Production
Dramatic Art
Economics
Educational Psychology
English
English Composition
English for Foreign Students
European Ideas and Institutions since 1919
Experimental Psychology
Food and Nutrition
French
General Psychology
German
Greek
History and Literature of Music
History and Principals of Physical Education
History of Ancient Art
History and Culture of Modern Asia
History and Culture of Near East

History of Education
History of Modern Art
History of Renaissance Art
History of Philosophy
History of Political Theory
Home Architecture and Decoration
Hygiene
Hymnology
International Economics
International Organization
Introduction to Christianity
Introduction to Political Science
Introduction to the Study of Literature
Labor Economics
Mathematics
Mechanical Drawing
Methods of Teaching Physical Education
Music Theory
Musical Acoustics
Non-Christian Faiths
Organ
Orchestration
Organization and Administration of Physical Education
Oil Painting
Philosophy of Education
Philosophy of Religion
Physics
Physiological Psychology
Physiology
Piano
Pre-Dental
Pre-Engineering
Pre-Medical
Psychology of Childhood and Adolescence
Psychology of Religion
Public School Methods
Reading Laboratory
Remedial English
Shakespearean Drama
Social Psychology
Social Relations
Spanish
Student Teaching — Elementary and Secondary
Swimming
The American Party System
Voice
Voice and Diction
World Literature

10

“plus marks”



PARK COLLEGE

For further information write or call

**ADMISSIONS OFFICE
PARK COLLEGE
PARKVILLE, MISSOURI**

PHONE, KANSAS CITY SURVEYED 1-2000

.....
from
one
building
and
eighty
acres

"So, together
 we build the
 Wall"
 — The Book
 of Nehemiah

Park College was founded in 1875 by Colonel George B. Park and John A. McAfee. Colonel Park turned over to the college a hotel and 80 acres of ground. With seventeen students, Dr. McAfee set about creating and maintaining a college. The faculty was small, and much of the students' time was given over to performing those chores necessary to keeping the college in existence. The housekeeping, cooking, maintenance and all other necessary work was performed by the faculty and students in a family relationship. Over the next forty years, the college grew and prospered while maintaining this same relationship. All of the buildings added to the college during that period of time, some of which is majestic old Mackay, the current Administration Building, were built by students as part of their work in contributing to the existence and growth of the community. Fees charged to the students were very low inasmuch as they contributed mainly their time and their effort in work in lieu of cash fees.

I.
 Beginning with the 1920's, several major additions were made to the campus in the form of the chapel, two new dormitories, the science building and the library through the beneficence of individual large donors. In addition, the operation of the college was financed to a great extent by donations from individuals, while the students, through the work program, continued to perform most of the services.

III.

With the depression and the years before World War II, the number of large single gifts to the college began to decline rapidly. In its strong position, with a number of new buildings and the need for relatively small fees because of the student work program, the college was able to maintain itself through this period of diminishing returns. During the Second World War, Park was host to a Navy V-12 unit and had a very small civilian male enrollment.

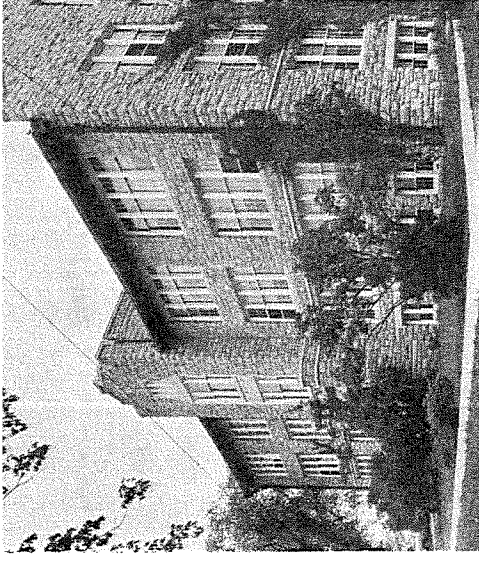
IV.

Following the War, Park found that it had much to do to overcome the problems caused by the depression and World War II. More than a million dollars in gifts, which came into the college between 1946 and 1952, had to go into basic maintenance. Costs were rising during and after the War and student fees did not keep pace, the tuition increase in 1955 being the first since 1948. Now Park is determined that it must continue to progress to become the outstanding Liberal Arts school in its area. Salaries must be increased (the Board approved a 20% increase in faculty scale for 1956-57, thereby adding approximately \$30,000 to the operating budget), new dormitories and other buildings must be added, equipment must be improved, the library must have new additions, and operating income must be increased.

History, a popular subject at Park, is important because of the lessons it teaches. A look at the history of Park demonstrates that the college must adapt its program of growth to its times. In the beginning, Park grew and prospered through the internal efforts which maintained the college and built its buildings.

The second era was one of self-maintenance (low costs plus contributions of time and work by students in lieu of high fees) plus building through large gifts.

Today there is still a contribution by students in maintenance, but faculty salaries, buildings, equipment and program advances must be supported by increased annual income. This is achieved through steady growth of continuous support plus some individual large grants. It is harder work, more must participate, but success is more permanent.

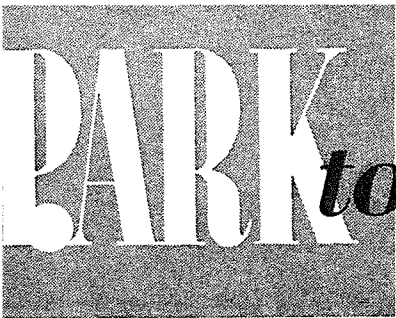


Wakefield Science Hall

in the heart
of America **PAR**
COLLEG

FOUNDED, SUPPORTED
 ADVANCED BY MEN AND
 WOMEN OF FAITH AND
 BELIEF IN INDEPENDENT
 CHRISTIAN EDUCATION

Parkville, Missouri
 suburban to Kansas City



PARK *today* —————> turning knowledge into power

Park College, Parkville, Missouri

Chemistry at Park College

The Department of Chemistry at Park College occupies two full floors of the Wakefield Science Hall. The department is staffed by three full-time professors representing a good balance of the various areas of chemistry. The course offerings include all of the courses recommended by the American Chemical Society Committee on Professional Training plus special service courses and opportunity for individual research. Every chemistry graduate is expected to complete a research project on a topic of his choice. Research projects recently undertaken include pharmaceutical, organic synthesis, analytical methods, nonaqueous solvents, petroleum, and polymer studies. Students are supplied with the finest equipment available — apparatus and facilities rarely found in undergraduate laboratories.

Special features in the department include a departmental library containing some 2,000 volumes of reference books and standard journals, a glass blowing laboratory, a photographic dark room, a spectrographic laboratory, and an x-ray crystal analysis laboratory currently under construction.

Nearly all of the chemistry juniors and seniors have the opportunity of working as departmental assistants or undergraduate research fellows. This provides excellent training for either industry or graduate study. Park College chemistry graduates are readily placed in industrial positions or graduate schools. During the past eight years, every graduate desiring to continue his study, has been placed in the university of his choice and has received a fellowship or assistantship to more than pay for his expenses.

The outstanding advantages of studying chemistry at Park College include:

1. Small classes to insure individual attention.
2. An opportunity to study under the direct supervision of a competent staff of chemists interested in teaching.
3. Well equipped laboratories with modern facilities.
4. An opportunity to be introduced to research methods on the undergraduate level.
5. An opportunity to complete undergraduate training in a department that is well recognized by industry and graduate schools.

Write to: DR. JOHN H. SCHNABEL, *Director of Admissions*
PARK COLLEGE, Parkville, Missouri