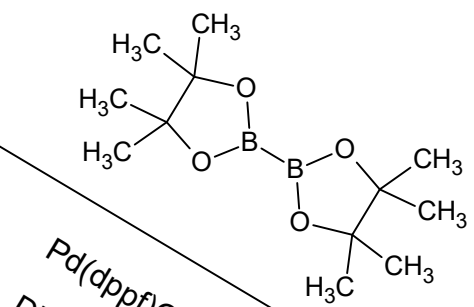
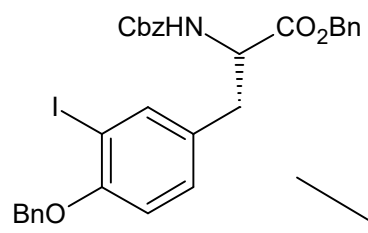
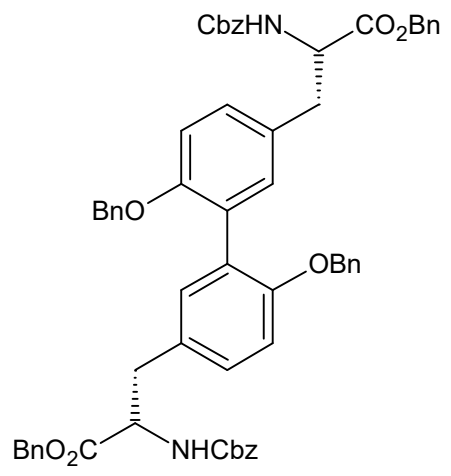


i) CbzCl, Na<sub>2</sub>CO<sub>3</sub>  
ii) BnBr, K<sub>2</sub>CO<sub>3</sub>



Pd(dppf)Cl<sub>2</sub>, K<sub>2</sub>CO<sub>3</sub>  
DMSO, 80 deg. C



H<sub>2</sub>, Pd/C, MeOH  
(quant.)

